

BITTACK



ESTD. 2011

BITTCH

ISSUE NO.121
APRIL 2026



**LADY PARK
THE STORY** P12



**MOONDANCE
CHARITY FUNDRAISER** P15



**GEORGE ALLAN FOOTBALL
SUNDAY 10 MAY** P25



RFC MALE VOICE CHOIR
P18

**LINLITHGOW PLANNING
FORUM** P6

DOWNLOAD A PDF OF THIS
MAGAZINE FROM OUR WEBSITE:
www.linlithgowcommunitymagazine.co.uk

- 4 One Linlithgow Business Improvement District**
New community memories; Record Store day; Banking Hub; Best place to stay
- 6 Linlithgow Planning Forum**
Wilcoxholm planning application examined
- 8 Linlithgow Academy**
Preparing for National Qualifications; support for every learner
- 10 Folk Fae Lithgae - Andrew Barber**
Captain at Linlithgow Golf Club
- 11 New Hopetoun Gardens**
Flowers good enough to eat
- 12 Bruce Jamieson** What's the story with the field at the west end of the Loch - Bruce Jamieson knows
- 14 Linlithgow Rugby Club**
In all respects an exceptional season for the Club
- 15 Moondance** 6th year of Linlithgow's hugely successful fund raising for cancer support
- 16 Super Scribblers, Springfield & Low Port Primaries**
Is there a Football World Cup coming up? Beyond the group stage?
- 17 Spokes**
Superb New West Lothian Cycle Map
- 18 Linlithgow RFC Male Voice Choir**
In concert with Le Chœur des Rugueux of Langon Rugby Club
- 20 Pages from the Bridge Primary**
Primary 7 orchestrates the stories from across all 7 classes
- 21 Specsavers**
Glaucoma - early check essential
- 22 Darroch Nurseries**
The nursery for traditional Scottish Trees
- 23 Business Award Winner**
Jewellery maker catches the eye of Dragon's Den star Theo
- 24 LADAS**
Spring is making an appearance - main tasks to tackle
- 25 George Allan Memorial Football Festival**
Football competition for future stars
- 26 Party at the Palace**
Returns to its roots at the Palace, John Richardson explains
- 28 Grange Garden Opening**
Last opened in 1999, visit the Grange Garden of an Edwardian mansion
- 30 Sporting Memories at the Rose Club**
The group with a sporting common denominator, for chat and company
- 31 Lisa Nettleton Book Review**
How I became a dog called Midnight - Ben Millar
- 32 Linlithgow Primary - new sound system**
School acquires state-of-the-art equipment - a vast improvement
- 34 Skin Happy** Healthy skin treatment for all age ranges
- 35 Rotary Tree of Light** Thanks to all who supported and donated
- 38 Paul Rolfe**
Housing (Scotland) Act 2026 - what's changing? Quite a lot.
- 39 Westport Vets**
Pet of the month - Sherman Waddall



DAVID TAIT
EDITOR



What's inside this Issue

Education once again takes centre stage in this issue. Linlithgow Academy leads the way with its strong focus on providing pupils with the resources they need to prepare confidently for their final exams. At the other end of the age spectrum, our primary schools are nurturing a love of reading and writing from the earliest age. From the Brig's active literacy work to the enthusiasm of the Super Scribblers, young learners are being encouraged to develop skills that will last a lifetime. The Super Scribblers also remind us of the importance of sport, with their lively take on Scotland's long-overdue bid to bring the Football World Cup home.

Sport features strongly throughout the magazine. All local primary schools have been invited to take part in the **George Allan Memorial Competition**, now proudly entering its fourth decade. This long-running event continues to nurture future sporting talent, as highlighted in Murdie Kennedy's article elsewhere in this issue.

On the rugby pitch, **Linlithgow Rugby Club** reports on a highly successful season, both on and off the field. The club recently welcomed old friends from France, reinforcing its strong international links. Looking ahead, preparations are under way for **RedsFest**, a beer festival featuring two 7-a-side tournaments and live music. Tickets for what promises to be a convivial event are available online via Eventbrite.

Garden lovers are also well catered for. Alongside our regular contributions from **LADAS** and **New Hopetoun Gardens**, we are delighted to feature a rare opportunity to visit the gardens at **Grange**. Last open to the public in 1999, these gardens surround an A-listed Edwardian house on the northern edge

of Linlithgow. This is a unique chance to explore a special local treasure and one not to be missed.

The magazine is also pleased to once again support the **Moondance cancer charity** fundraiser. It is a privilege to be associated with such a dedicated and successful group of participants and supporters whose energy and commitment continue to make a real difference.

Linlithgow Business Improvement District turns its attention to the vital role towns play in fostering deep connections to the places we are born in or choose to call home. This Easter, the BID is organising a children's competition, with Crème Eggs and lifelong happy memories as the reward. The article also highlights the remarkable queues that form outside **Low Port Music** on the High Street during Record Store Day, as vinyl enthusiasts hunt for classic releases. Updates on the new **Banking Hub** at the Vennel are included, along with news many will already know: Linlithgow has been voted the **Best Place to Live in Scotland**. This accolade is due in no small part to the army of volunteers who give their time and energy to making the town such a special place.

While Linlithgow benefits from a wide range of active community groups, the **Planning Forum** focuses on the town's long-term development. Its article raises important concerns shared by a growing number of residents, including congestion on the High Street, population loss, a shortage of suitable housing for renters, first-time buyers and downsizers, and other infrastructure challenges. While volunteers may not be able to build roads, they can work together to influence the opinions and decisions of those who can.

Finally, after a hiatus at Bonnyton Farm since 2015, **Party at the Palace** is set to return to its roots at the Peel in August this year. The move marks a return to both its original location and capacity.

4 EASY SUBSCRIPTION PAYMENT OPTIONS...
SEE WEBSITE FOR DETAILS

Party founder **John Richardson** met with the Black Bitches' Ronald Hunter to reflect on the event's journey since its debut in 2014. Following years of growing capacity and careful review, successful negotiations with **Historic Environment Scotland** mean the Peel is once again ready to welcome home Party at the Palace.

Support the Magazine That Supports Linlithgow

Every issue of the magazine is made possible by the generosity of local subscribers and donors. Your support helps keep a publication alive whose sole purpose is to celebrate, connect, and champion everything that makes Linlithgow such a special place to live.

Our subscription levels are set with the community in mind - designed to be affordable and accessible, so that as many residents as possible can take part in supporting a magazine that truly belongs to them. Even a modest regular contribution makes a real difference.

The magazine plays a vital role in publicising the work of local voluntary groups, clubs, and organisations - the people who quietly give their time and energy to make Linlithgow "the best place to live in Scotland." By subscribing or donating, you are directly helping these stories be told and shared.

There is no other free publication dedicated solely to keeping residents and visitors informed about all that makes Linlithgow unique. If you value having a strong, independent community voice, we invite you to help build its future.

If you've been meaning to subscribe - or haven't yet realised how much your support matters - now is the perfect time. Visit www.linlithgowcommunitymagazine.co.uk, click **Subscribe**, and choose an option that works for you. Together, we can ensure the magazine continues to inform, inspire, and bring our community together.

>>> For details and events visit **what's on** www.mylinlithgow.com <<<

Linlithgow Physiotherapy
Local Physiotherapy Clinic.

We can help with:

- o Back/Neck Pain
- o Sports Injuries
- o Joint/Muscle Pain
- o Ante/post Natal Care
- o Modified Pilates
- o Bladder Problems
- o Headaches
- o Dizziness
- o Acupuncture

26c High Street
Linlithgow
EH49 7AE

Karen Graham
Pamela Armstrong

Tel. **01506 238189**

www.linlithgowphysiotherapy.co.uk
contacts@linlithgowphysiotherapy.co.uk

Healthcare Insurers Recognised
HCPC registered

A range of luxury gifts handpicked and brought to your High Street

NEW
cute matchbox-sized sentiment gifts

View our full range and latest offers instore or visit lilypondcrafts.co.uk

LILYPOND CRAFTS & GIFTS

Follow us on facebook to discover our latests finds

Black Bitch magazine design & production: www.cghcreative.co.uk

NEXT ISSUE COPY DEADLINE
13 MAY 2026

CONTACT DAVID TAIT, EDITOR
on.a.lead@gmail.com

WEDDINGS • EVENTS • PORTRAITS

UNIT 7
BRAEHEAD ROAD
EH49 6EP
(opposite Linlithgow Rose F.C.)

Gift Vouchers on sale now
Appointments available 7 days

01506 671700
www.paulgavin.co.uk

PAUL GAVIN
PHOTOGRAPHY



TOWNS - A HAVEN FOR LOCKED IN MEMORIES

It will come as no surprise to anyone that Linlithgow has many events that go back decades, forming part of family traditions and memories down the generations.

In this issue we are going to focus on the relatively 'new events on the block' adding to the locked-in memories for the new generation of children who live in our lovely town.

However, a short trip down memory lane will take us back to the days when kids learned the ways of the business world in the big family square known as the Monopoly board. Early locked-in memories of negotiating with siblings about who was getting the racing car versus the iron; paying rent for landing on square with a green house or red hotel; Do Not pass Go; Community Chance and Old Kent Road. These were all locked-in before the age of 10.

These days, even the cubs and scouts were seen recently tapping into the concept, with a 'Scoutopoly' badge being earned for patrols travelling to different locations (game board squares) to complete challenges such as knot-tying, outdoor skills, and team-building tasks.



Childhood place memories were even recalled at university, when the money became real and the intensity ten-fold more intensive, before the board being upended by a disgruntled "tenant". Happy Days, and great memories. All locked-in.

EASTER BREAK

This Easter break, hundreds of wide-eyed children will be wandering up and down the High Street to find the wee chicks in shop windows, with a letter to reveal the phrase they have to say when handing in their completed entries in Tesco. All in return for a Crème Egg.



Some of the 'older' kids will be able to talk about previous trails in the good old days back in the early 20's and recall shops where letters have been before. The 'Christmas Dinner trail of '23, Elf on the Shelf and the Halloween Pumpkin trails,

all follow the same formula but completed with great enthusiasm by all participants.

Even though some kids may have become 'too old' to do the trails, they will still recall them as early positive childhood memories of

walking around the town writing the names of the shops where they found each letter.

This isn't just a bit of fun as the research about towns backs up. Locked-in early memories shape our connections to where we live.



It indicates that deeply ingrained early childhood memories play a critical role in shaping how individuals connect to, experience, and value their adult environments. It is a phenomenon closely tied to the psychological concept of place attachment.

These memories become fundamental parts of identity that influence where people feel 'at home' and how they behave in their surroundings.

The places of our early childhood are not merely the backdrop of our formative years; they are actively internalised, becoming a part of us. The "backward glance" at early experiences is a dimension of attachment, allowing people to feel "at home" in specific landscapes throughout their lives.

It's no accident that Linlithgow was named the best place to live in Scotland. It's been earned through all the activities and community groups who make the town what it is today.

NATIONAL RECORD STORE DAY

Saturday 18th April 2026

The fact that there is a 'National Record Store Day', where people queue up along the high street to spend a decent chunk of their monthly disposable income on vinyl records originally released in the 1960's, 70's and 80's, tells you everything you need to know about memories, nostalgia and thinking about the past.

We all grew up somewhere with youthful, carefree years spent in poster filled bedrooms, pubs, clubs, social centres, dance halls, abandoned warehouses or barns, with music of our time attached to those memories with our mates; had our first kisses and even met the person who we married.

In Linlithgow, Mancunian born Chris, probably spent his time in the Hacienda, listening to The Smiths, Happy Mondays and The Stone Roses. Little did he realise over 40 years later, he'd be handing out early morning bacon sandwiches and coffee along Linlithgow High Street.



Hundreds of limited edition, exclusive vinyl releases and events take place in participating independent record stores worldwide. It's an annual gathering that brings artists and music fans together to celebrate indie record retail with exclusive vinyl releases. And the public love it. That's the power of memories and belonging to a place and a time. It never leaves you.

BANKING HUB UPDATE

Our Banking Hub opened in its current temporary home in the Burgh Halls in June of last year.

Banking Hub new home at the Vennel



Gemma Mackie, Regional Manager from Cash Access UK has now provided an update on the new location for the hub (which will have an external ATM):-

"I am delighted to confirm we have now signed the lease for the permanent home of Linlithgow Banking hub. The permanent hub will be located at 30 The Vennel.

Fit out can take anywhere from 6-10 weeks however we anticipate the hub to be operating from its permanent location by early June. Once I have a more concrete timescale for fit out and opening, I will be in touch to share this information.

In the meantime, the temporary hub remains open in Linlithgow Burgh Halls with cash transactions available at the counter Monday to Friday and community bankers operating on the below rota schedule. "

Monday: Santander

Tuesday: Barclays

Wednesday: No Community Banker

Thursday: Royal Bank of Scotland

Friday: Bank of Scotland

BEST PLACE TO LIVE IN SCOTLAND

Linlithgow was named the best place to live in Scotland by The Sunday Times in its annual Best Places to Live guide.

Strong community spirit, good schools and convenient location for commuters to Edinburgh and Glasgow. Judges described Linlithgow as a family-friendly town offering "clean air and a village mentality", highlighting its medieval high street, access to outdoor spaces and a wide range of community activities.

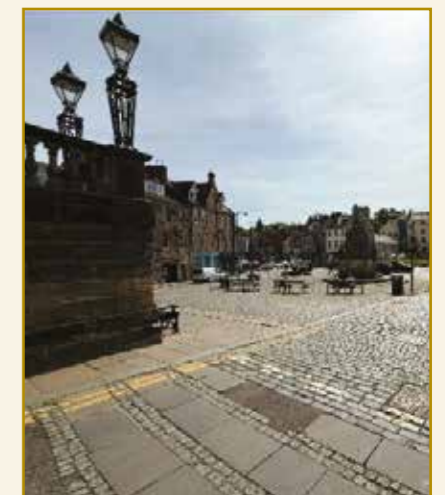
It doesn't take too much of a stretch of the imagination to assume that Linlithgow's range of digital and print assets about the town, will have caught the judge's attention during their deliberations.

Events such as the annual cardboard boat race on the Union Canal were also noted as key parts of local life.

Seven other Scottish locations were included in the guide: Aberfeldy in Perthshire, Braemar in Aberdeenshire, Dollar in Clackmannanshire, East Linton in East Lothian, Newhaven in Edinburgh, Scotstoun in Glasgow and Melrose in the Borders.

Helen Davies, editorial projects director and Best Places to Live editor at The Sunday Times, said the guide showcases "thriving locations with a strong sense of community".

She added: "It is full of places that show that our village, town and city centres can still be full of life, as well as places bursting with natural beauty, culture, connectivity and most importantly a sense of community."



Judges visited each location and assessed a range of factors including schools, transport links, broadband and mobile coverage, access to green space and the condition of the high street.

BUSINESS GOODBYE: BAKED

(74 High Street)

We have shared some of the comments which business owner Sophie posted on Facebook on 16th February 2026 -

There is no easy way to word this post, but after careful consideration and many many months of reflection, coming up to 3 years in business, I have decided to close the BAKED chapter in my life. This has been one of the hardest decisions I've ever had to make, but one that I know is right for me.

I can't thank you all enough for your kindness, interest, and genuine love for this thing I've created. In fact, what I'll miss most is the customers and the little community we've built out of coffee, cake and mini weekly catch ups. Our last weekend open will be the 13th and 14th of March.

I'm open to discussions if anyone is interested in taking on BAKED as a business and pouring as much love and hard work into it as I have.



Lots of love and thanks, Sophie x



WILCOXHOLM UNDER SCRUTINY: WHAT REALLY MATTERS IN THE PLANNING DECISION



“CHOKE POINT AT CANAL BRIDGE”



The deadline for submitting objections to the proposed Wilcoxholm housing development has now passed, and the planning process has entered a critical stage. The application, which seeks planning permission in principle for 220 houses south of the Union Canal, will soon be considered by the West Lothian Council Development Management Committee.

At this point, councillors will not be weighing popularity or personal opinion. Their decision must be based on what planning law calls “material considerations”. Understanding what those are – and how well they have been addressed by individual objectors and Community Council – helps explain why the Wilcoxholm proposal has attracted such close attention and controversy.

WHAT ARE “MATERIAL CONSIDERATIONS”?

In simple terms, material considerations are the planning-related issues that decision-makers are legally required to take into account. They must be directly relevant to the use and development of land and supported by planning policy, evidence, and the law.

Common examples include:

Compliance with **local and national planning policies**, such as the West Lothian Local Development Plan and Scotland’s National Planning Framework 4. The relevant Local Place Plan may be considered a material consideration ahead of the local development plan which takes account of it. The next local development plan following the registration of the Linlithgow Local Place Plan is due to be published in 2028.

Transport and road impacts, including traffic levels, road safety, site access, street layouts and footpath networks.

Environmental effects, including impacts on the landscape, trees, drainage, flood risk, habitats and protected species.

Built heritage, such as effects on conservation areas, listed buildings, or archaeological sites.

Residential amenity, including privacy, noise, lighting, and overall living conditions.

Design and placemaking, covering layout, density, scale, and materials.

Certain construction-related impacts, availability of services and infrastructure to cater for the development.

Equally important is what cannot be taken into account. Matters such as loss of property value, loss of a private view, boundary disputes, restrictive covenants, general construction disturbance, or personal views about the developer are not relevant in planning law, even if they are strongly felt within the community.

Understanding this distinction matters. It helps ensure that planning decisions are made fairly and consistently – and it helps the public focus their comments on issues that can genuinely influence the outcome.

HOW THE WILCOXHOLM OBJECTIONS MEASURE UP

An analysis of **51 objections** to the Wilcoxholm application shows a striking level of consistency and focus on material considerations. While individual wording varies, the same core planning issues are raised repeatedly across submissions from neighbours and residents across Linlithgow.

The overwhelming emphasis is on **infrastructure capacity, transport constraints, and compliance with the development plan.**

Over **80% of objectors** argue that existing infrastructure in Linlithgow cannot accommodate a development of this scale. Roads, GP and dental services, drainage, and flood risk are all cited as already under pressure. Many point to existing congestion on Linlithgow High Street and the Edinburgh Road, warning that additional traffic would worsen delays, safety risks, and air quality. Some objectors mention the pressure on schools but as stated in a recent Black Bitch planning article, Linlithgow’s population is declining and predicted school roles are set to fall. The lack of family homes at affordable prices is negatively impacting our community. However, going forward the lack of school places at primary and academy level is not a major planning problem.

Transport issues feature even more strongly. Around **85% of objectors**

identify traffic and movement as a central concern. Particular attention is drawn to the canal bridge, widely described as a choke point, and to the narrow, unpleasant and inadequate footway beneath it. Parents highlight the risks for children walking or cycling to school, especially during peak times, and many argue that the application fails to assess cumulative traffic impacts realistically.

Active travel is another recurring theme. Roughly **two-thirds of objections** raise concerns about walking, cycling, and wheeling access. Objectors note the lack of a safe, direct connection to the Union Canal towpath, the absence of a convenient canal crossing near the centre or west of the site, and hostile cycling conditions on the Edinburgh Road. Many argue that the proposals fall well short of the “20-minute neighbourhood” principles now embedded in national planning policy.

A significant number of objections – around **60%** – also challenge the **Social Infrastructure Review** submitted with the application. Residents point to internal arithmetic errors, missing pages, and contradictions within the report. Concerns are raised about the somewhat strange reliance on denominational school capacity at Sinclair Academy in Winchburgh, failure to calculate pupil yield properly from 220 homes, inconsistent GP-to-patient ratios, and conflicting walking distance figures. For many, these errors undermine confidence in the evidence base used to justify the development.

Taken together, the objections present a consistent picture: unresolved transport and infrastructure constraints, non-compliance with the Local Development Plan, and reliance on evidence that many residents consider incomplete or unreliable. On this basis, a large number of objectors conclude that planning permission in principle should be refused or, at the very least, deferred until these issues are addressed.

THE COMMUNITY COUNCIL’S POSITION

The Community Council has taken a more value-based position based on the Linlithgow Local Place Plan, supporting in principle the idea of medium-density housing south of the canal, provided it forms part of a comprehensive and well-planned extension of Linlithgow. It stresses the importance of delivering key landscape and community infrastructure north

of the canal, including a community woodland, wildlife corridor, allotments, orchards, and pedestrian and cycle connections linking to Maidlands, the canal towpath, and surrounding neighbourhoods. In this sense, the Community Council’s vision aligns with many national policy objectives around placemaking, biodiversity, and active travel. However, the Community Council also raises a series of significant reservations that mirror many of the public objections.

First, it points to site capacity. The application proposes 220 dwellings on the southern part of the site alone, exceeding the Local Development Plan capacity of 200 units for the entire site, north and south of the canal combined. This non-compliance with the Local Development Plan is a **material consideration** notwithstanding that the Community Council are in agreement with the intensification of the use of the southern site. Land is a scarce resource and the Community Council wish to see an argument for higher numbers of housing units reflecting the demand for a mix of tenures and housing types specifically for families and the elderly downsizing.



Land with no plan

Second, it highlights the problem of undefined land north of the canal. The application is largely silent on the future use of this land, creating the risk that further development could follow within the scope of the planning permission in principle, without proper scrutiny.

Third, the Community Council raises concerns about prematurity. The scale of development relies on major infrastructure – particularly a new Eastern Link Road connecting the Edinburgh Road to the M9 Burghmuir junction. This is not infrastructure that can realistically be delivered by one site in isolation and as advocated in the Linlithgow Local Place Plan, would be more appropriately addressed through the forthcoming 2028 West Lothian Local Development Plan.

The absence of a comprehensive masterplan is another key criticism. The application does not include a detailed masterplan or design code, despite requirements in the current Local Development Plan, National Planning Framework 4, and long-standing guidance such as Planning Advice Note 83. Without this, the Community Council argues, it is impossible to assess whether the development would deliver a coherent, well designed, high-quality place observing the rules of placemaking. Indicative layouts are said to fall short of demonstrating a design-led, place-based approach appropriate for a prominent gateway site to a historic town.

Finally, the Community Council echoes widespread concern about active travel and canal integration. There is no firm commitment to a canal bridge at the west of the site, despite this being identified in site delivery requirements and widely regarded as essential for sustainable travel. The proposals are also criticised for failing to respond adequately to the urban design opportunities that arise from the views of the Palace and the relationship of the site with the Union Canal, which is of course a Scheduled Ancient Monument.

WHERE THINGS NOW STAND

The Wilcoxholm application will now be assessed by planning officers, whose report will summarise policy compliance, consultee responses, and public representations. That report will form the basis of the Development Management Committee’s decision.

Whatever the outcome, one thing is clear: the objections submitted by residents and the Community Council are not simply expressions of opposition. They are, in large part, carefully framed around material considerations that planning law requires councillors to address.

As the decision approaches, the Wilcoxholm case stands as an example of how informed community engagement can shape the planning debate – not by volume alone, but by focusing on the issues that genuinely matter in determining how Linlithgow grows in the years ahead.

John Kelly
Linlithgow Planning Forum

PREPARING FOR SUCCESS:

How we are supporting Young People ahead of the 2026 Qualifications Scotland Exams



LINLITHGOW ACADEMY



As summer approaches, so too does some of the most consequential dates in the school calendar, the national examination diet. The 2026 Scottish exam diet runs from April 22 to June 2, with results issued on August 4, 2026. Across our school community, young people in the Senior Phase are preparing for these National Qualifications. There is a strong, positive focus on ensuring every learner feels supported, confident and ready to succeed.

This year is particularly significant, as Scotland enters a new era in education. The familiar Scottish Qualifications Authority (SQA) has now been replaced by Qualifications Scotland, a new national body established as part of wider education reform. While the name has changed, the message for learners remains reassuring, the qualifications themselves continue as normal, with a renewed focus on fairness, clarity and putting learners at the centre of the system which may mean some future reforms in the years to come.

In the classroom

A particularly important part of preparation for these examinations is the continuous feedback pupils receive throughout their courses which builds steadily over time through regular check-ins, discussions, reports and reflection.

Teachers provide ongoing feedback in class, helping pupils understand what they are doing well and where they can improve. This is often supported by learner conversations, where pupils can discuss their progress, ask questions and set targets for the next steps in their learning.

Dedicated revision and consolidation time within classes also plays a key role. Teachers build in opportunities

for learners to revisit key concepts, strengthen their understanding and practise applying their knowledge in different contexts. This ensures that revision is not something that happens only at home but is embedded as part of everyday learning.



Tracking Progress and Identifying Support

Pupils also benefit from regular formative assessment opportunities. These low-stakes assessments, such as quizzes, practice questions and class tasks help check understanding, identify gaps and build confidence over time. Importantly, they also help pupils become more familiar with exam-style questions, reducing anxiety and improving performance. Assessments, including formal winter assessments also help teachers monitor progress

and identify areas where additional support may be needed.

This ongoing tracking of progress allows for timely interventions and ensures that support can be tailored to individual needs. It also helps pupils understand their own progress, giving them a clearer picture of where to focus their revision efforts.

More information on how we track progress can be accessed via this QR code:



Additional support

Outwith the classroom a wide range of supports are in place to help young people build knowledge, confidence and effective study habits.

A key part of this is the school's supported study programme, which offers regular in-person sessions across a wide range of subjects including Maths, English, Sciences, Art, PE, Humanities and Business. These sessions provide valuable opportunities for pupils to revisit key topics, ask questions and receive targeted support from their teachers in a calm, focused environment.

The school also offers Easter holiday study support workshops, this year across 18 subject areas with teachers coming into school and giving learners the chance to take part in more intensive revision sessions in the lead-up to exams. These focused classes help consolidate learning, build exam confidence and provide practice with exam-style questions, all at a crucial point in the calendar. Thank you to our teachers for giving up some of their Easter holidays to do this!

Study Skills

Alongside subject-specific support, there is also a strong emphasis on helping pupils develop effective study skills. Learners are encouraged to move beyond simply re-reading notes and instead use strategies proven to work,

such as active recall, spaced practice and regular self-testing. These techniques help deepen understanding and improve long-term retention, key ingredients for exam success.

Teachers also support pupils in planning their revision, helping them to break subjects into manageable chunks and set achievable goals. This structured approach helps reduce stress and ensures that revision time is used effectively.



More information on study skills advice can be accessed via this QR code:



Beyond the school

In addition to the extensive support offered within school, learners also have access to the National e-Learning Offer, delivered through e-Sgoil. This provides free, live online study sessions covering a wide range of subjects, with over 50 webinars available each week.

These interactive sessions are led by experienced teachers from across Scotland and offer an excellent opportunity for pupils to reinforce



their learning, revisit key topics and gain additional explanations. They are particularly useful for independent study, allowing learners to access high-quality support from home at times that suit them.

More information on this can be accessed via this QR code:



Exams can feel challenging, but they are also an opportunity for young people to demonstrate the knowledge and skills they have developed over time. The message for our young people is a positive one, with preparation, support and the right mindset, success is within reach!

Across Linlithgow Academy and the wider community, we know there is a shared commitment around helping our young people succeed. We wish all our young people every success as they commence the 2026 Qualifications Scotland examinations.



Grant Abbot, Head Teacher



Be Part of What's Next

Linlithgow Museum is entering an exciting new phase, and we're inviting enthusiastic individuals to join our Board and help shape the future of this valued community resource. As part of a friendly and dedicated team, you'll play a role in preserving local heritage while supporting the museum's growth and development.

Whether you're looking to use existing skills or gain new experience, this is a rewarding opportunity to get involved, meet like-minded people, and make a meaningful contribution.

Apply Now

We'd love to hear from you for an informal chat about getting involved –

enquiries@linlithgowmuseum.org.

Opportunities



Treasurer

Play a key role in supporting the museum by overseeing its financial health and ensuring everything runs smoothly behind the scenes. From monitoring income to maintaining clear and accurate records, you'll help provide the foundation that allows the museum to grow and thrive.



Secretary

You'll be at the heart of the Board, helping to keep things organised, connected, and running effectively. You'll coordinate meetings, maintain key records, and support communication across the team, playing an important role in the museum's continued development.



Trustee

You'll help shape the museum's strategic direction and support its continued growth. Working with a friendly, committed Board, you'll contribute ideas, guide decision-making, and help ensure the museum remains a vibrant community resource.





Folk Fae Lithgae **ANDREW BARBER**

In the early 1970s, Andrew Barber's family were among the first residents of the new Springfield housing development in Linlithgow.

"We moved from Avonbridge to 64 Springfield Road in April 1970, when I was just four months old", he told me. "There were only three or four streets. We used to walk up to Boghall farm to see the horses and Gunn's Baron's Hill building site was our playground".

In April 1974, Andrew's dad, Peter, bought the Masonic Arms – better known as Miss King's – at 179 High Street, but it would take two years of renovation before the whole family could move into the flats above the pub. That included Peter's parents, who came up from England to help run the business. Peter and his wife Dorothy worked hard to establish the Masonic Arms as one of Linlithgow's busiest licensed premises and Andrew has fond memories of all the characters who frequented the pub and the great involvement in local events, such as the Marches, the Gala Day, and the Pram Race along the High Street.

In P1 at Linlithgow Primary School, Andrew met Kirsti Grierson, who he would eventually marry many years later. Kirsti's parents served on the Gala Day committee with Andrew's dad and Andrew's first re-collection of Kirsti's mum was when she came as a parent helper on a P1 trip to Edinburgh Zoo.

After six years at Linlithgow Academy, Andrew studied molecular biology at Glasgow University and shared a flat for four years with his old school pal, James Shaw. Andrew later worked at the University and studied for a PhD, which

he never completed. With a young family to support, he looked for something more permanent and moved into scientific sales, as he explained:

"I spent twenty-two years with one company, which through merger and acquisitions, grew and grew and I ended up as a senior director with them until two and a half years ago when I retired. I was in charge of a global chemicals division with teams all over the world. It was a big job."

Since retiring from his high-pressure position, Andrew has enjoyed travelling with his wife and he plans to do much more of that. He also spends a lot of time on the golf course, at home and abroad, and the game has been one of his life-long passions. In December last year, he was appointed as Captain at Linlithgow Golf Club and he is meeting that challenge head on:

"I think the big thing at the club is the change to the two routes of nine, which is really an attempt to provide value for money for those that are busy and have work and family commitments. Instead of trying to find time to play an eighteen-hole, four-hour competition, there will be regular nine-hole two-

hour competitions, which means that people will be able to get up to the club, play, and then get back to their family. That way, they will get value for their membership."

"We are also trying to make more use of the course, which is lying empty a lot of the time. In general, we are just trying to make the club that little bit better. It's the old adage of leaving it in a better state than you found it. We have a great group of volunteers who are all working hard to make sure that the club continues to thrive. My brother and mum were captains here and I have been involved since I was a youngster. I am very proud to be the captain of the club and hope that I can give something back to it".

Murdoch Kennedy



CHORAL MASTERWORKS

From Renaissance polyphony to contemporary soundscapes, join us for a luminous evening of sacred choral music in aid of Aspire Linlithgow.

Saturday 25th April 7:30pm
St.Michael's at Linlithgow and Avon Valley Church,
The Kirkgate, Linlithgow, EH49 7AL

In Support of **Aspire Linlithgow**
Project 600

Tickets £12
from 'Far from the Madding Crowd' bookshop,
or on the door.

Eventbrite

<https://cadenza.org.uk/concerts/>

Cadenza
Linlithgow & Avon Valley Church of Scotland is a Scottish Charity Reg No. SC016185

ADDING A FEW FLOWERS TO YOUR SALADS OR PUDDINGS...

Impress your family and friends by adding a few flowers to your salads or puddings, or perhaps surprise them? Many flowers are edible and they can add sparkle, and some of them add flavour to your dishes. But some are bitter and even poisonous, so if in doubt just use the ones we talk about here.



Last month we pulled some of our forced rhubarb stems and made an easy fool which we decorated with the fresh yellow petals of Primrose Everlast. Cook the chopped up rhubarb with the smallest amount of water on the hob, sweeten with sugar, truvia or honey to taste and mix in an equal quantity of Greek yogurt, chill before serving. As a general rule, remove any green bits of the flower, and decorate the fool however

you fancy. You need a sensitive palate to taste the flavour of the primrose flowers but they make a striking decoration.

As the summer salad season approaches the little flowers of Violas make their appearance in our salads. They are used to



add some sparkle to our salads, without any significant flavour. But for sparkle and flavour you don't need to look beyond the purple flowers of Chives. Pull the globe shaped flowers to pieces, each piece will have a tiny globe base that is crunchy to chew into with a gentle onion like flavour.



Rose petals make a dramatic decoration to any pudding. This pink climbing rose Mary Delaney has a pale white base to each petal which you should cut off as it can be a bit bitter, the rest of the petal is gently rose flavoured to taste.



Lesley's posy pot of edible flowers contains Clary Sage with its striking decorative leaves around the buds; many flowers from the Salvia family are very decorative and edible. Nasturtiums add bright colour and sweet peppery flavours to dishes and the petals of sunflowers, picked off, add sparkle to salads and stir fries.



Edible flowers posy pots

A word of warning: pick fresh flowers early in the morning, avoiding old flowers or any that may have been sprayed with insecticide: if in doubt that a flower is edible, don't pick it; if someone is prone to hay fever they should avoid eating edible flowers because of the pollen content.

Other recommended edible flowers include:

Courgette flowers that can be stuffed.

Blue Borage flowers – remove the black bits at the base of each flower.

Day Lily flowers, Hemerocallis.

Dill and Fennel, use the small individual florets.

Salad Rocket, white and yellow flowers full of spicy Rocket flavour.

Dianthus – pull the flowers apart and enjoy the clove-like flavour and bright colour.



Dougal Philip and Lesley Watson
New Hopetoun Gardens

so much more than just a garden centre



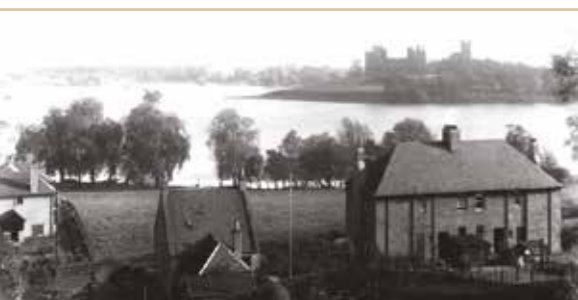
PEAK GARDENING SEASON!
THERE IS SO MUCH TO DO AND BUY FOR YOUR GARDEN AT THIS TIME OF YEAR. **DON'T FORGET TO ADD A FEW PLANTS FOR LOVELY EDIBLE FLOWERS.**

www.newhopetoungardens.co.uk

LADY PARK

Bruce Jamieson

Have you ever wondered about the field at the west end of the loch which occasionally has sheep grazing in it? The area is called Lady Park and it has a very interesting history.



Lady Park – today, and in the 1930s.

Up until the very early 18th century, the area was open land used as common grazing by the inhabitants of the west end of Linlithgow. In 1703, it was bought by **Bailie Robert Andrew** as part of a purchase of all the tail rigs on the North High Street – stretching from the present doctors' surgery to Masons' Land – a tenement belonging to the craft guild of stone-workers. This large building stood next to the "Crown Inn" which later became the "Customs House Hotel", at the junction of the High Street and St Ninian's Road.



The Palace Bar of the Customs House Hotel, c 1890.

Thereafter, the whole area was known as "**Andrew's Rigs**" until

1711 when Bailie Andrew's son sold the land to **Thomas Ronald**, the town's Dean of Guild – the magistrate responsible for all building work in the burgh. This included settling disputes, for example when a neighbour protested about a property extension intruding into his land or the blocking up of the entry into his close with a midden heap. The Dean of Guild was a powerful character as his permission

was also required before any new property could be erected or major building alterations were undertaken.

In 1718, Thomas Ronald was elected Provost of Linlithgow and immediately he was faced with the aftermath of the 1715 Jacobite Rebellion. Trade had been disrupted and the burgh's finances had been sorely depleted by having to host occupying government troops. The new provost's first act was to increase taxation – hardly a popular move, and one that led to a protest from local tradesmen having to be broken up by the Burgh halberdiers.

It would not have helped matters when Provost Ronald, a wealthy merchant and brewer owner, demonstrated his affluence by buying a large tenement bordering on Lady Park called McNiven's Land, and spent a great deal of money rebuilding the property.

In 1730, his son, **William**, fell heir to the house along with its tailrigs, including a large area called Couper's Croft. He went on to purchase land to the west of the burgh called Williamcraig which he farmed and thereafter took for himself the title 'Laird of Williamsraig'. His wife, **Mary Ewing**, was accorded the designation 'Lady Williamcraig' and this led to a field behind her house being called "Lady Park". After her husband's death, she continued to stay in the property until at least 1774 when the land passed to her heirs.

The firm of **A and J Dawson** purchased the majority of the Ronald land holdings in 1837 – combining Couper's Croft with Lady Park – the name by which the whole area became known. The Dawson family owned the town's distillery – initially situated at Bonnytown Farm, and then on the Edinburgh Road, in an area called St Magdalene's. Perhaps their newly acquired lands at the west end of town were used to grow barley for their whisky making enterprise. Four Dawsons became Provosts of the Burgh: Adam (1811-1818); his son, also called Adam (1829 -1848); Adam's brother John (1855- 1869) and, the last of the powerful Dawson dynasty, another Adam, John's nephew, who was provost from 1869 until 1881.



Lady Park, shown within the 1832 Parliamentary Boundary.

The area was occasionally used by the community, such as in 1893 when it

hosted a Contest between eleven bands including the Carriden Brass Band. £60 was allocated in prize money, with £20 going to the winner. A bank of seating was erected around the arena and, after **Provost Andrew Gilmour** opened proceedings, the bands played a piece of their own choice. On the announcement that the winner was the Hawick Saxhorn Band, there was uproar and, as stones were thrown, the Judge, **John Gladney**, had to be escorted off the ground by the police. The contest was never repeated!



In the early 20th century, the land was acquired by **Sir Charles Chalmers** of Longcroft, the owner of Loch Mill Paper Mill and, for some years, Convenor of West Lothian County Council. Records exist showing some of the dealings with regard to Lady Park under Chalmer's ownership. For example, in 1904 the local architect **William Michael Scott** was given right of access across the property to the lochside.



W. M. Scott designed many local buildings such as the Nobel Explosives Factory.

During the period of Chalmers' ownership, a number of buildings were constructed along St Ninian's Road – the highway which bordered Lady Park. These new edifices included 'Belmont', 'Fernlea', 'Crannog', 'St Anne's' and 'Leapark'. The owners of these properties were naturally anxious to ensure that no building would take place on Lady Park in order to protect their outlook and also to make sure that the view from Linlithgow Palace and the Lochside

was not marred by unwanted intrusions.



'Belmont', 'St Annes' and 'Leapark'

On Chalmers' death in 1924, Lady Park, was acquired by local transport entrepreneur **William Aitken**. He had started his working life with a single horse and cart and ended up with a fleet of 50 large vehicles based at Stockbridge, where Domino's Pizza is now.



William Aitken and part of his fleet of Leyland Buffalo lorries.



In 1925, Mr Aitken had a sworn testimony prepared declaring that Lady Park should be kept as an open space, with no permanent building of any nature ever to be built upon it. This rule still applied when Aitken agreed to sell the site, putting the park into the hands of lawyer **J.G.B. Henderson** who was tasked with raising the funds required to purchase the land.

If this could be achieved, he was commissioned to set up a Board of Trustees to oversee the management of the parkland with a view to

"preserving the amenity of the palace, church and loch of Linlithgow."



Looking over 'St Anne's' towards Lady Park.

A request duly went out to secure the necessary funding and eventually 75 individual people and organisations responded. Donations ranged from £500 from the Earl of Rosebery, £100 from Seton Murray Thomson, Laird of Preston, and £50 each from a group of dedicated gentlemen who were to go on to become the Trustees. Most donated one or two guineas – with half a crown (2s 6d) coming from an anonymous donor.

Other well-known local contributors included: the 2nd Marquess of Linlithgow; Robert Crichton, Manager of Scottish Oils; Norman Main, Town Clerk; Charles Maconochie of Avontoun House; Mrs Ramage of Lochcote; Francis Tudsbery of Champfleurie; former judge, Lord Salvesson; Manager of the British Linen Bank and Provost from 1935-37, James Tulloch; James Lovell, owner of the Avon Paper Mill and local GP Dr James Hunter. Business enterprises which contributed included the Nobel Explosives Company, the Scottish Motor Traction Company, William Harland and Sons (varnish manufacturers), William Sim and Sons, (paint suppliers) and Arthur Bell and Sons, (whisky distillers). Other contributions came from supporters far and wide including Robert Skinner, the Governor of Donaldson's Hospital and various



Sheep grazing on Lady Park.



individuals from Edinburgh, Glasgow, Penicuik, Portobello, Greenock, St Andrews, Leven, London, Grimsby, Market Drayton and even Pasadena in California. In all, a total of £1063 7s. 6d was collected which was enough to purchase the field with some funds left over to maintain the property. This was supplemented by letting out the park to a local farmer for grazing sheep – an arrangement which continues to this day with the Smart family who farm at Balderston and Loch House.

In due course, a consortium was formed - made up of vested interests, influential men, legal experts and interested parties. The first Trustees were: the 6th Earl of Rosebery (of Dalmeny Castle), a military man and later Secretary of State for Scotland; William Meek, of Millfield, a tannery owner and existing Town Provost, living in 'Millfield', St Ninian's Road; Bailie William Dougal, banker, living in 'Belmont' in St Ninian's Road; John Currie Liddle, writer (solicitor) from a Bo'ness law firm now called "Anderson and Liddle"; Patrick Callender, tannery owner, living at 31 St Ninian's Road; William Braithwaite of 'Crannog', St Ninian's Road; JGB Henderson of 'Nether Parkley', a Linlithgow lawyer, and finally a nominee from the Commissioner of HM Works.

The Trustees had it in their power to deter any access to the site. It was specifically not to be used for playing football or any other games as this would be a nuisance to the occupiers of neighbouring houses. This, however, did not stop the site being converted into allotments during the "Dig For Victory" campaign in World War Two. The Trustees also had the right to plant trees, erect fences and repair boundary walls – always being mindful that they had to keep the property in good repair – a situation that would be scrutinised by all local ratepayers.

The current Trustees are all residents of St Ninian's Road, several of whom being the occupants of the homes which previously belonged to some of the original Trustees. Despite limited resources, the Trustees are actively involved in maintaining the field as open space, adhering to the same principles as laid down in 1930. By its constitution, the Trust still has to meet at least once a year and is still pledged to preserve a small area of unspoiled Linlithgow.



LINLITHGOW RUGBY CLUB WHAT A MONTH FOR THE RUGBY CLUB!

We look back on an exceptional month both on and off the pitch and forward to the annual RedsFest on Saturday 16th May.

Mad March!

Early in the month The Reds travelled up to Elgin on league business and ran in 90 points in a dazzling display of attacking rugby against Moray. The Reds' players claimed no fewer than four hat-tricks featuring Alfie Muir, Ruaridh Stewart, Ross Tulloch and Jack Frame. Jack Frame also kicked 10 conversions out of 14 attempts, bagging himself a personal tally of 35 points! Later in the month the Reds were away at second placed Ardrrossan Accies, losing out agonisingly to a penalty kick in the final play of the game, giving the home side a 28-27 win. Two league bonus points were some consolation for the Reds, who had outscored their opponents by 5 tries to 3, and they sit comfortably fourth in the table with one match to play.

During the weekend of the Scotland v France international, the Rugby Club welcomed a team from Plaisir Rugby Club, located near Linlithgow's twin town of Guyancourt. This marked the 39th twinning match, with only the Covid year of 2021 missing since the Rugby Club first visited Guyancourt back in 1985. For the three nights of their visit, the 25 French players were hosted by players and other Club members. The visitors enjoyed the international match on Saturday and then played against a Linlithgow Select on Sunday for the West

Lothian Cup. The Reds clinched a double for Scotland, following up the national team's superb 50-40 victory with their own 40-19 win on the Sunday. After the match, there was a post-match meal and presentations, followed by a night of celebrations at the Club. The French departed on the Monday morning after a great weekend.

With little time to rest, the Rugby Club hosted the first Vodafone Roadshow the following weekend, as part of Vodafone's sponsorship with Scottish Rugby for the community game. Over 300 people attended an event that coincided with Scotland's final Guinness M6N match against Ireland in Dublin. The match was broadcast live into both the Clubhouse and the Indoor Training Centre, which had been transformed into a family fun zone for the day. Scotland's most-capped player Donna Kennedy (115 caps) and recently retired Matt Scott (40 caps) were



in attendance to run a training session with the Wee Reds P6s and P7s, in addition to featuring in a live Podcast with the Rugby Journal (Rugby Lives) before the Scotland match and at half-time. All attending were able to enjoy superb street food, representing each of the countries of the 6 nations, provided by Simmer Doon, plus a series of fun zone activities including the Vodafone passing

challenge, the Vodafone Photo Booth and GW soft tipped darts.

RedsFest - not to be missed!

A great day out with a fantastic beer festival, live music and two Rugby Sevens' tournaments (men and women). Kicking off at midday on Saturday 16th May, this year's RedsFest will feature both outdoor and indoor action across the Clubhouse, rugby pitches and the Marquee Indoors in the Indoor Training Centre. Tickets for the day can be purchased online through Eventbrite - scan the QR code on our advert on page 35.

**SAT
16
MAY**

Images: Graham Black

Above: Both teams after the twinning match.

Left: Donna Kennedy & Matt Scott. Former Scotland internationalists with the Wee Reds P6s and P7.

Below: Calcutta Cup & Auld Alliance Cup: Both trophies were on display at the Vodafone Roadshow.



Fly Half
www.linlithgowrugbyclub.co.uk



LINLITHGOW MOONDANCE 2026, BACK FOR A 6TH YEAR!



The Linlithgow Moondance is back for its 6th year! On Saturday 13th June, the Linlithgow Rugby Club Indoor Marquee will once again open its doors for an unforgettable evening. With great music, exciting raffle prizes, and a vibrant atmosphere, it promises to be a spectacular night as 400 ladies come together for fun, laughter, dancing, and - most importantly - to raise money for a truly worthy cause.

The Linlithgow Moondance has quickly grown to become the largest Moondance event in Scotland and remains the biggest fundraiser for the charity. Since the very first event in 2018, this incredible night has raised a phenomenal £44,838, accounting for almost half of all Moondance funds across Scotland. Last year we reached an amazing £10,000, and we're aiming to match that success again.

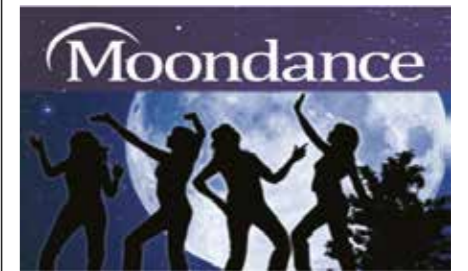
This year, all money raised will go directly to Breast Cancer Now, a charity the Moondance has proudly supported from the beginning, providing vital help to those affected by breast cancer.

We're thrilled that live band Astoria, are returning for the second year running. Their energy and stage presence set the tone brilliantly last year, and we can't wait to have them back. This talented five-piece from south-west Scotland travel the length and breadth of the UK performing at events, gigs, and weddings - last year they even made the long journey home to Stranraer after the Moondance wrapped up.

One of the best things about this event is that it's right here in Linlithgow - no travel, no hassle, just a fantastic night on your doorstep. Whether you're planning a night out with girlfriends, colleagues, neighbours, classmates, or simply feel overdue for a fun evening, this is the perfect occasion. From the very first Moondance we've welcomed groups of all sizes, and we'll always seat groups together, whether on the same table or across a multiple of tables. Pre-event table planning makes all this possible!

Doors open at 7.30pm with a glass of fizz on arrival, followed by live music, dancing, a fully stocked bar, and a raffle packed with brilliant prizes. Those who've attended before will know this event sells out quickly, so if you'd like tickets, you can get them from the Moondance team - Amanda Bannister, Kirstin Crombie, Christine Evans, Helen Hassall, Bridget McGee, and Angela Moran. Tickets are also available from local outlets including Beautique Beauty Salon and Flowers by Carolyn, or by messaging the Facebook page, or emailing Linlithgowmoondance@gmail.com.

Stay up to date by following the Linlithgow Moondance Facebook page @linlithgowmoondance, Instagram, or scan the QR code below. We can't wait for another fantastic night - and to raise even more money for an incredible cause. We look forward to seeing you there!



**SAT
13
JUNE**



FOOTBALL WORLD CUP INTRODUCTION!



Hello! This article is going to be about a SUPER exciting event happening this summer! Can you guess what it is?

ITS THE WORLD CUP 2026!

It's an amazing topic to kick start your summer! You will learn about the interesting history about the World Cup, and we have a brain scratching quiz to test your knowledge. Do you think you can pass? Also learn about the interesting ways people celebrate the World Cup. Would you want to celebrate in some FUN ways as well? Don't forget about the World Cup draw as well! Go now and read about all these amazing facts and we guarantee you will learn something new! GO SCOTLAND!!!

History of the World Cup

Countries all around the globe try and get a chance to participate in the world cup (that takes place in a different place each year) to fight in football, instead of war.

There are some countries (like Scotland and India) who hardly ever get the chance to play in the world cup as they didn't get through the qualification matches before.

This year, Scotland got a place in the world cup, making thousands of people around the country party hard, and feel even more excited for the world cup.

The world cup was founded in 1930 and is about to celebrate it's 100-year birthday in the upcoming 2030. The hosting countries in 2030 are going to be Spain, Portugal and Morocco, the centenary matches are going to

be hosted in Uruguay, Argentina, and Paraguay.

Scotland's previous football World Cup appearances:



Last time Scotland appeared in the World Cup it was 1998 - that's 28 years ago!

The first time the Scottish women's team played, it was in the year 2019 but they didn't get past the

group stage.

The last manager of Scotland during the last world cup was Ally Macleod. The team is now managed by Steve Clarke.

Scotland has taken part in the World Cup eight times now but have never got past the group stage but fingers, toes and eyes crossed we have more success this year!



How to Celebrate!!

Lots of people love football, that is one of the reasons why the world cup is so popular. Did you know over 5 billion people watch the world cup every year? Here are some of the ways you can celebrate the world cup:

Play Football Video Games Together

FIFA/EA Sports FC tournaments.

Winner gets a small "golden boot" prize (real or homemade).

Set Up a Kids' Zone (or just for fun!)

Mini penalty shootout with soft balls.

Colouring pages of teams' flags.

Create your own World Cup trophy with craft materials.

Make a World Cup Food Tour

Brazil Pão de queijo

Japan sushi

Mexico tacos

Morocco tagine

Host a Matchday Watch Party

Set up themed snacks (e.g., dishes from teams playing).

Decorate with flags, team colours, or football-themed props.

Offer "predict the score" cards for guests.

Build a Photo Wall or "Fan Zone" at Home

Print flags, posters, or player cutouts.

Add props like scarves, hats, or inflatable trophies.

Works great for selfies and social media.

Themed Movie/Documentary Nights

Pelé: Birth of a Legend (PG)

Bend It Like Beckham (12A)

Diego Maradona (documentary) (12)

Take the Ball, Pass the Ball (Barcelona-era doc) (12)

Countries not in the World Cup

Although there are many countries going to the world cup such as Scotland, France Germany and Morocco there is a few countries that will not be attending. The following countries will not be there Nigeria, Cameroon, Mali, Congo, Gabon, Sierra Leone, Guinea-Bissau, Ethiopia, Sudan, Togo, Chile, Peru, Venezuela, China, North Korea, Iraq, Oman, Syria, Vietnam, Lebanon, Bangladesh, Costa Rica, Honduras, Guatemala, El Salvador, Trinidad, Tobago.



Pick your Card



The ULTIMATE Football World Cup QUIZ

1. A World Cup winning team has never been managed by someone of a different nationality than the players. TRUE OR FALSE

ANSWER: TRUE

2. Which country has won the most World Cup titles?

ANSWER: BRAZIL

3. Which country is the current reigning champion?

ANSWER: ARGENTINA

4. What year was the first World Cup held?

ANSWER: 1930

5. What is the name of the award that's given to the best player of the tournament?

ANSWER: THE GOLDEN BALL



SPOKES WEST LOTHIAN BIKE MAP

"The new Spokes West Lothian map is really brilliant. I'm particularly impressed with the inclusion of the Kelpies and the Falkirk Wheel. A beautiful piece of work."

This is just one of many compliments on the 5th and fully revised edition of the West Lothian Cycle Map from Spokes, the Lothian Cycle Campaign. Indeed since its launch in late 2025, Linlithgow's local bookshop has twice had to re-order stocks!

Every bikepath and road, together with known tracks and footpaths, in the county has been surveyed by Spokes volunteers, to produce a superb map at a 'cyclist-friendly' scale of 3cm to 1km. The reverse side includes five town plans, at a larger scale (including of course Linlithgow!) and details of special places including our canal centre, palace, museum and many more. There's also a list of some of the main new path projects planned by the Council for the next few years.

The new map has been extended west to most of Falkirk - because we were desperate to include the Kelpies! and of course the bike paths leading to them.

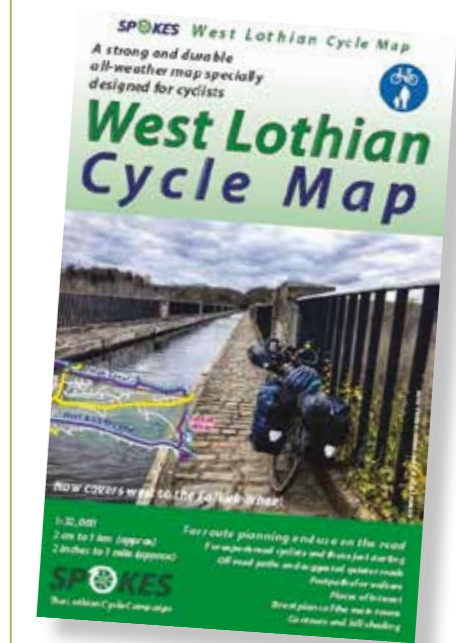
All our maps now come on what looks and feels like smooth paper but is in fact a special polythene (recyclable at large supermarkets) which means you can use it outside in wet weather - and it is hard to tear, wet or dry!

Of course, many people nowadays use digital mapping, but a printed (and waterproof) map is a fantastic extra. You can lay it on a floor or table to see a large area in detail, for route planning or chatting about where you have been. Oh, and when you take it on a ride (or walk) it never runs out of battery! Many offices have a copy pinned up for staff to plan their commute or leisure rides, and one person told us he so loves the maps that he has our Edinburgh, East Lothian and West Lothian maps on his wall at home! (We also do Midlothian).

The last question, of course, is how you get your copy?

To make it easy, and to support local business, Spokes is offering a voucher giving you £1 off the £7.50 cost, only at Far From the Madding Crowd - make sure to use it before the expiry date!

[For more about Spokes maps, see spokes.org.uk/spokes-maps]



VOUCHER

Cut out this voucher and hand it in at Far From the Madding Crowd, 20 High Street

It entitles you to £1 off one Spokes map (West Lothian, Midlothian, East Lothian or Edinburgh).

Valid until 31 May 2026



FOOTBALL WORLD CUP GROUPS 2026

GROUP A.	GROUP B.	GROUP C.	GROUP D.	GROUP E.	GROUP F.
Mexico	Canada	Brazil	USA	Germany	Netherlands
South Africa	Qatar	Morocco	Paraguay	Curacao	Japan
Korea REP.	Switzerland	Haiti	Australia	Cote d'Ivoire	Tunisia
Wild Card	Wild Card	Scotland	Wild Card	Ecuador	Wild card

GROUP G.	GROUP H.	GROUP I.	GROUP J.	GROUP K.	GROUP L.
Belgium	Spain	Wild Card	Argentina	Wild Card	England
Egypt	Cabo Verde	France	Algeria	Portugal	Croatia
Iran	Saudi Arabia	Senegal	Austria	Uzbekistan	Ghana
New Zealand	Uruguay	Norway	Jordan	Colombia	Panama

CHOIRS IN UNION

SAT 9 MAY Once you've heard the first cuckoo of spring the next thing to listen out for is the annual concert of Linlithgow RFC Male Voice Choir. This year the choir are hosting a French choir, Le Chœur des Rugueux, who are from Langon, located some 20 miles from Bordeaux.

The French choir will be visiting Linlithgow to sing in the concert on the evening of **Saturday May 9** (a date for your diary!) which will be held in St. Michael's Parish Church. They will also be spending some time exploring our town – "The best place to live in Scotland" – and other attractions in the surrounding area. Linlithgow's choir **Chairman, Jim Carlin** is delighted to see the choir again and said:



"We have a long connection with the guys from Langon - who have been here once before - and we

have also visited and sung in Langon. It is a pleasure to host this group who are also attached to a rugby club - as we in Linlithgow are. Our choir is the only one in Scotland connected to a rugby club and we have been in existence now for over 35 years."

Le Chœur des Rugueux is based at Langon Rugby Club and was officially formed in 2009. **President Michel Delvy** shared some background:



"A resounding victory when touring Italy in 2003 was quickly

followed by a heavy defeat at the post-match reception... by a rich and brilliant repertoire of songs from our Italian friends! Following that disappointment, some players formed a singing group, which eventually led to the formation of Le Chœur des Rugueux choir. Over the years we have developed a rich and varied repertoire consisting of traditional songs from Southwest France (Basque and Gascon) - enriched with French popular songs and international melodies. We have forged strong bonds of true friendship with Linlithgow RFC Male Voice Choir and are delighted to be coming to Scotland again".

Linlithgow Choir's events manager **Chris Thomas** has overseen a varied programme to entertain the visiting choir and its travelling supporters. He explained:

"Our town has such a historic past that it would be amiss if we didn't share it with our guests. The planned itinerary includes a guided tour of the Palace with its French connection via our own Mary Queen of Scots and - in keeping with our historic region - we hope to take them to see Stirling Castle and the world-famous trio of bridges across the Firth of Forth. A day out in Edinburgh is also on the agenda".

The concert itself will be an eclectic mix of classical music interspersed with modern and traditional pieces from both choirs. **The Compère for the evening will be Bruce Jamieson** who regularly hosts the choir's concerts. **Jim Carlin** added:

"Over the winter months our musical director, Jim McGuigan, has been rehearsing the choir to ensure an excellent event. This year's concert will hopefully show our abilities and versatility with an entertaining choice of songs. We are also planning to perform songs alongside our French

Make a note of the Date...

Linlithgow RFC Male Voice Choir and Le Chœur de Rugueux, Langon concert.

St Michael's Parish Church, on May 9 at 7.30pm. Ticket details as shown.

visitors with some unusual use of both our languages to continue our famous entente cordiale."

The net proceeds from the Concert will be donated to Children's Hospices Across Scotland (CHAS).

Tickets are £10 and £5 for primary school children accompanied by an adult.

They are available from:

Far From the Madding Crowd, Linlithgow High Street

Email: qjallar@googlemail.com



Any Choir Member



Want to know more or interested in joining the Linlithgow RFC Male Voice Choir?

Contact Chairman **Jim Carlin:** 07743 410591 or Secretary **Gerry McLean:** 07722 107067

Choir Meets at Linlithgow Rugby Club each Monday at 7.45pm.



MALE VOICE CHOIR



Linlithgow RFC Male Voice Choir



Le Chœur des Rugueux

Scotland and France in Union

Saturday 9 May 2026, 7.00pm
St. Michael's Parish Church, Linlithgow

TICKET INFORMATION:
£10 (£5 primary school aged children with adult)

Available from:

Far from the Madding Crowd, Linlithgow High Street

Email: qjallar@googlemail.com

Any Choir Member

NET PROCEEDS FROM THE CONCERT WILL BE DONATED TO:

Children's Hospices Across Scotland (CHAS)

website: <https://linlithgow-rfc-male-voice-choir.my.canva.site>

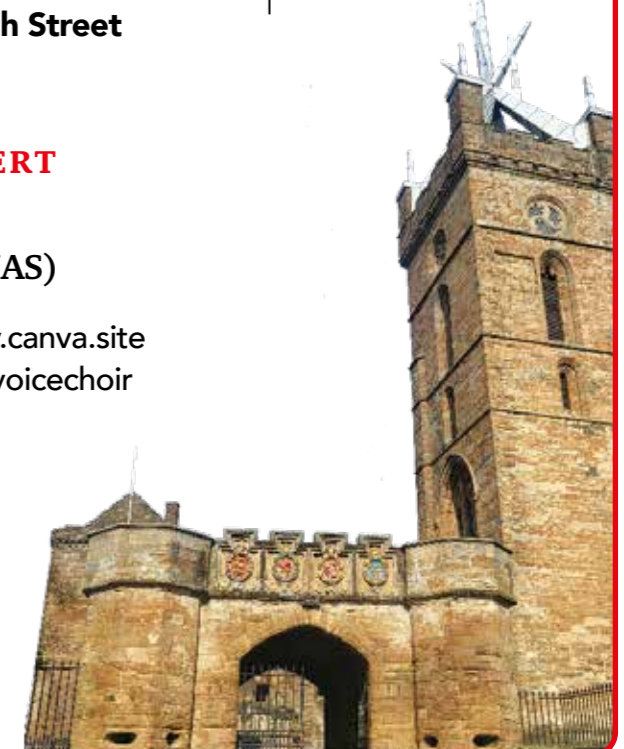
facebook: www.facebook.com/linlithgowrfcmalevoicechoir

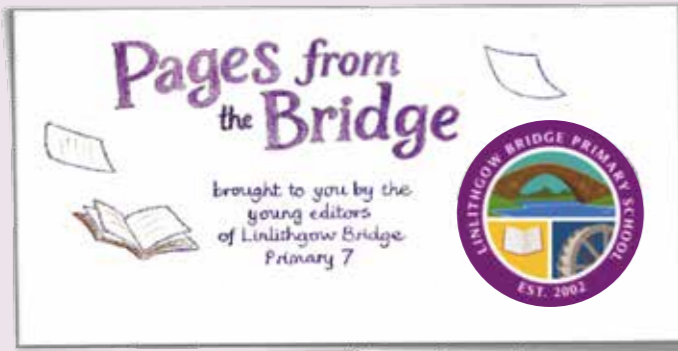


Concert Compère
Mr Bruce Jamieson



MALE VOICE CHOIR





A Literacy Showcase from Linlithgow Bridge Primary School
Reporter: Max Henderson
Photographer: Elyza Blackwood

Welcome from Primary 7

Hello everyone. We are excited to share this month's Pages from the Bridge, bringing you reading and writing highlights from every stage across Linlithgow Bridge Primary School. Each class has been exploring new stories, developing their literacy skills and creating fantastic work we are proud to celebrate. We hope you enjoy hearing all about it.

Primary 1: Learning Through Pets and Vets

P1 have been enjoying lots of stories linked to their Pets and Vets theme, including *Ginger, Mog and the V.E.T, the Hairy Maclary series, The Hospital Dog and This is Gus*. The class have been finding out what different vets do and learning how to care for guinea pigs, dogs and cats. Vet Stuart even sent a poorly animal each week for the pupils to look after.



They created sponge printed dog art, newspaper collage cats and visited Westport Vets to discover how real vets care

for sick animals.

In writing, they made information posters about caring for dogs and wrote descriptions of their own pets. They also produced lovely recounts of their trip to the vet.



Primary 2: Mary Anning and Discovering the Past

P2 have been learning about Mary Anning, known

as the Mother of Palaeontology. The class explored her fossil discoveries, her importance in science and why her work mattered. Their reading and

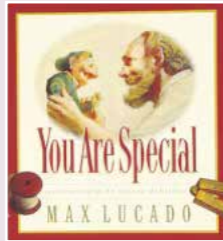
writing activities linked closely to this learning and helped them understand how evidence from long ago can tell us about the world.



Primary 3: Exploring Forces, Feelings and What Makes Us Unique

Primary 3 have been reading *You Are Special* by Max Lucado and exploring its themes of kindness, confidence and what makes each person unique. The class discussed how the characters choose which opinions to let "stick" and how to focus on their own strengths.

Linking the story to their science work on forces, P3 investigated which materials are truly un-stickable by designing and testing their own umbrellas. They recorded their results and wrote clear explanations of their



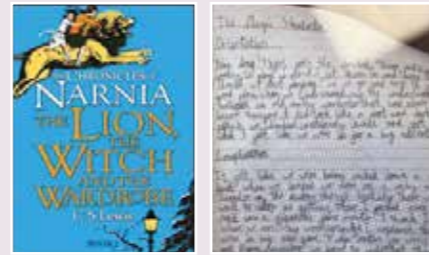
findings. The children learned that, just like the Wemmicks, they can decide what stays with them and what they can let splash away.

Primary 4: Stepping into Narnia

P4 have been reading *The Lion, The Witch and The Wardrobe* by C.S. Lewis. They have explored the world of Narnia, developing their comprehension skills and looking closely at characters, settings and



themes. Pupils used Reflective Reading Task Maps to support prediction, discussion and analysis. They also created extended pieces of



writing based on the story, including introductions, conclusions and descriptive work inspired by the magical world beyond the wardrobe.

Primary 5: Action Adventures and Flying Words

Primary 5 have been enjoying two very different books this term. One is *Words Can Fly* by Donna Ashworth, a collection of uplifting poems that encourages pupils to think about how powerful kind and positive language can be. The children have been inspired to create their own messages and discuss how words can lift others up.

They have also been diving into *Stormbreaker* by Anthony Horowitz, an exciting adventure story that follows a young spy on a dangerous mission. P5 have loved the fast pace, twists and cliffhangers, and the book has sparked brilliant discussions about bravery, teamwork and problem-solving.

Both books have brought energy and enthusiasm into the classroom, showing pupils that reading can be calming, inspiring and thrilling all at once.



Primary 6: Euroquiz

P6 recently took part in the West Lothian heat of the national Euroquiz, an annual competition for P6 pupils across Scotland that encouraged them to work together while building their knowledge of Europe, including languages, geography, culture



and European affairs. The event helped pupils develop teamwork, communication and confidence, all strongly linked to literacy at Second Level, where learners apply skills

in listening, talking, reading and understanding information. By discussing questions, interpreting new vocabulary and agreeing answers as a team, P6 strengthened their language awareness and applied their literacy skills in a meaningful, real-world context.

Primary 6 and Primary 7: A Creative Journey into Film and Storytelling

Primary 6 and Primary 7 recently visited Howden Park Centre for a Film Screening and Workshop Day delivered by Reconnect Theatres in partnership with Dundee Contemporary Arts (DCA). Pupils took part in morning introductions and ice-breakers before watching a selection of short international films exploring curiosity, communication and problem-solving. These included titles such as *The Girl with the Occupied Eyes, Buzz, Mu, Wolfie and Lola and the Sound Piano* all designed for young audiences and presenting ideas through a variety of animation techniques.

During the workshop, pupils jotted down similarities, surprises, patterns and puzzles they noticed in each film. They also learned about the wider screen industry, discovering that filmmaking skills apply to many modern careers and that even everyday devices like



phones play a role in creating digital content. A fun, active session

introduced them to camera shot types, including wide shots, close-ups, high and low angles and more, helping them understand how filmmakers shape meaning on screen.

After a well-received ice-cream break, pupils took part in further discussion and interactive activities, thinking more deeply about the artistic choices behind each film. The experience supported key literacy skills such as listening, talking, analysing and responding, while helping pupils appreciate storytelling from a global perspective. The day was engaging, creative and full of memorable learning.

Primary 7: Lord of the Flies and Film Writing

P7 have been studying *Lord of the Flies* by William Golding, exploring themes such as leadership, fairness, conflict and morality. Pupils discussed how characters change, how groups behave under pressure and how the story encourages readers to think about responsibility.



As part of their film workshop with P6 (see above), they made a spoof film about Lord of the Flies in which children get stranded on a dreadful Tuesday at school instead of on a desert island.



Looking Ahead Across the school, pupils have been curious, imaginative and engaged in their reading and writing. From exploring fossils to stepping into Narnia and debating leadership on a terrible Tuesday, every stage has shown creativity and enthusiasm. We look forward to sharing even more learning in the next edition of *Pages from the Bridge*.

Understanding glaucoma: A guide to protecting your sight for the future



GLAUCOMA is a group of eye conditions that can cause permanent vision loss if left untreated. Often developing slowly and without noticeable symptoms in its early stages, it's one of the leading causes of blindness worldwide.

Diana Kelly, store director at Specsavers in Linlithgow, has recently launched a service that allows her to monitor people with lower-risk glaucoma or ocular hypertension directly in store, instead of hospital.

With her expertise, she's answered some of the most commonly asked questions about glaucoma, including how to spot it early and what can be done to protect your vision.

What is glaucoma?

Diana says: 'Glaucoma is a condition where the optic nerve which connects your eye to your brain becomes damaged. This is often linked to increased pressure inside the eye, although it can occur even when pressure is normal.'

'The optic nerve is essential for vision, so any damage to it can lead to permanent sight loss if not detected and managed early.'

What are the signs of glaucoma?

'One of the biggest challenges with glaucoma is that it often has no obvious symptoms in the early stages. Vision loss usually starts gradually, affecting your peripheral (side) vision first.'

'Because this change is so subtle, many people don't notice anything wrong until the condition has progressed. In more advanced cases, people may experience "tunnel vision".'

'A less common form, called acute glaucoma, can develop suddenly and may cause severe eye pain, headaches, blurred vision, halos around lights, or nausea. This is a medical emergency and requires immediate attention.'

Who is at risk of glaucoma?

'Glaucoma can affect anyone, but some people are at higher risk. This includes those over the age of 40, people with a family history of glaucoma, and those with certain medical conditions such as diabetes or high blood pressure.'

'If you fall into any of these groups, we'd recommend you prioritise regular eye tests'

How is glaucoma detected?

'The best way to detect glaucoma is through a routine eye examination. At your appointment, your optometrist will carry out a number of simple tests,' continues Diana.

'Our OCT technology can also take an in-depth look behind your eye, which can help identify potential early signs of glaucoma.'

Can glaucoma be cured?

'There is currently no cure for glaucoma, and any vision that has already been lost cannot be restored. However, with early detection and the right treatment, we can manage the condition preventing it from causing any further damage.'

'Glaucoma may be a serious condition, but with early detection and proper care, many people can maintain good vision throughout their lives,' says Diana.

To book an eye test at Specsavers Linlithgow, call 01506 534 484 or visit www.specsavers.co.uk/stores/linlithgow.

A tree-mendous Opportunity



Photo © Doug Shapley

Hello! I'm Elana, and I run Darroch Nurseries, a local non-profit where I grow native Scottish trees. So much so, a customer recently picked up the phone and said "Ah, you're the Tree Lady!" Honestly? That works for me.

I started growing Scottish trees in 2021, right here in Linlithgow, getting to know how it all works, and learning by doing. By 2022 it was clear just how much I loved it, and that there is a real demand for it, and was lucky enough to get some start-up funding. This helped turn Darroch (which comes from the Gaelic word for oak) into

a social enterprise, find a nursery site, and scale up. We've grown about 75,000 trees since then, and they're planted in all corners of Scotland, up the remotest glens, and in front gardens. We'll hopefully be planting some Linlithgow sourced and grown trees as part of the Battle 500 events later this year!

Our specialism is growing native Scottish trees, and providing a local supply for trees on farms, forest and river planting projects, and lots more. We collect all of the seeds ourselves, so we know exactly where everything that we grow has come from. Right now we are at the start of the season, sowing seeds that were collected back in 2023 and 2024 that are ready to come alive now (it takes a while to grow a tree!). I also teach folk how to grow trees and support a network of other small tree nurseries across Scotland.

Linlithgow is where Darroch started, where we have our community, and where we want to stay rooted. Many of the trees we grow come from Linlithgow trees, and a good chunk of our volunteers live here too, as do I. Together we collect the seeds, sow them in the Spring, help them grow into baby trees, and then see them off into the big wide world. It's a really satisfying feeling to be able to do this together and know there will be an impact beyond our own lives.

We're looking for a new Nursery Site...

Darroch has grown much faster than I ever dreamed and is literally bursting at the seams, with loads of demand for what we grow. So, we are looking for a new nursery site! Ideally this would still be in Linlithgow, where our community is. This would look like 1-2 hectares, with water supply, and which can be fenced to keep deer and rabbits from munching our trees. If you can help us find our new home, and continue to do good work, please get in touch with us! hello@darroch-nurseries.co.uk.

It continues to amaze me how much folk love what we do. It's easily the most satisfying work that I've ever done. It can be hard graft, but so worth it. It's mind-blowing to see a seed that I collected by hand start to come alive and turn into a tiny seedling that will likely outlive me by decades – it's wild, and very addictive. It's brilliant to watch other people have the same reaction when they learn about what we do. I hope I get to do this for many more years!

If you want to know more about what we do, you can visit our website or give us a follow on social media – just search for Darroch Nurseries.

LINLITHGOW BASED BUSINESS AWARD WINNER

Business owner Gillian Hemmings from Linlithgow has been recognised at an awards event run by Dragons Den star and retail entrepreneur, Theo Paphitis.

Founded in 2024 and run by Gillian from her riverside home in Linlithgow Bridge, Candi Co was selected as one of Theo's weekly winners earlier this year. The awards which have been running since 2010, known as Small Business Sunday (#SBS), celebrate and support small businesses across the UK, with over 4,000 winners to date. At the Birmingham event on 20th February, Gillian was presented with her certificate by Theo in person and had the opportunity to connect with



fellow small businesses owners.

In a subsequent press release, Gillian said "Meeting Theo and receiving my certificate was such a proud moment. Running a small business on your own can feel quite isolating at times, so being part of the #SBS community and celebrating alongside other founders was really special. Everything I create is handmade from my home in Linlithgow, so to see my brand recognised at such a prestigious event, and to personally hand Theo some of my jewellery, felt amazing."

From her dining room table, Gillian creates colourful beaded jewellery, including gemstone, personalised and Scottish-inspired designs and in addition to her local and other UK customers, Gillian exports widely overseas including Australia, USA and Canada. An unexpected success also came when a number of contestants on the reality TV show Married At First Sight wore items from Gillian's Candi Co collection.



Having taken inspiration from her mum who runs a vintage jewellery business, Gillian explains that she had a previous 15 year career in PR and Marketing. However, after an extended break, as a mum of two young boys who are autistic, Harris(8) and Eddie(5), she decided to become a stay at home mum to better support the boys (who attend Linlithgow Bridge Primary School) within a regulated home environment where routine can be the norm. In addition, working from home provides much needed flexibility for Gillian during times when, along with husband Garry, 'juggling life' can be challenging.

Gillian adds that a number of support initiatives are available to those who run their own business. For example, Business Gateway West Lothian have been particularly valuable to Gillian through the availability of free local advice, webinars, online

resources and funding guidance. Recently, Gillian stepped out of her comfort zone as the main speaker at a Business Gateway International Women's Day event in Broxburn where she was also able to meet with some 'really inspirational business owners.'

Working with a range of trusted suppliers is very important to Gillian. This has enabled the sourcing of quality materials and gemstones which can be relied upon for overall durability.

Being passionate about customer service has been the key to success for Gillian where, by creating pieces of jewellery to suit individual tastes and preferences, she is able to offer a personal touch approach and provide an attractive product range at affordable prices.

Around town, Gillian's jewellery can be found in Lilypond - which is stocking a kids' Gala Day collection - Aran and Art of Morrow (Low Port Centre), where Gillian has a monthly pop-up shop at the Night Market.

Website: www.candicojewellery.com (Free delivery within Linlithgow)

Email: info@candicojewellery.com

Ronald Hunter

LINLITHGOW CRICKET CLUB



Join us at: Boghall EH49 6AB. start Monday 11th May for 8 weeks Time: 6.00pm – 7.00pm Cost £50
Send email to andrewpoveyrichards@gmail.com



STATIONERY • ART • ACCESSORIES • HOME

HAVE YOU FOUND US YET?

FIND US ACROSS FROM PLATFORM 3 PUB

10% OFF YOUR NEXT GIFT

JUST BRING IN THIS AD
(VALID UNTIL 30TH AUGUST 2026)

ALLOTMENT IN APRIL AND MAY

LINLITHGOW AND DISTRICT ALLOTMENT SOCIETY



We are still waiting for some warmer weather as I write this at the beginning of April. The cold and wet weather that we have been having in March doesn't make it easy on an allotment. But despite the weather, the buds are starting to appear on our fruit trees and work is going on a pace to prep beds for planting. First and second early potatoes are in the ground.

One vegetable that I always grow are French beans, which are costly to buy. They are easy to grow, are very tasty and harvesting can start as early as late June if started off in a greenhouse or on a windowsill in April. Sow one or two seeds per pot from mid-April-May under cover.



Harden off before planting out in late May when seedlings are 5cm (2in) tall. The plants will keep producing, if picked regularly, until autumn. There are compact, fast-cropping dwarf varieties, ideal for small spaces or containers, which don't need support, and larger climbing varieties for growing up tall

supports, providing a crop over a longer period. My favourite varieties are:

Dwarf beans - Safari,
Climbing beans - Cobra, Blue Lake and Cosse Violette.

The purple pods of Cosse Violette go green when cooked. Just make sure they are planted out after the last frost. They like plenty of compost and keep well-watered.

It is believed that the cultivation of French beans in South America has been as far back as 5,000 BC!



Happy growing and eating!

The main tasks in April:

> Sow spring onions, lettuce, Swiss chard, spinach beet, beetroot, radish and spinach outside – protect with fleece if the temperature is too low.

> Feed asparagus with fish, blood and bone fertiliser.

> Broad beans sown indoors earlier can be planted out after hardening off.

> Plant out summer cauliflowers.

> Plant potatoes – main crop – early potatoes should be in the ground by now.

> Sow winter cabbage and savoy, mid to late varieties of brussels sprouts, purple sprouting broccoli and kale under cover for transplanting later.

> Towards the end of the month pot on tomato plants into their final containers.

> Sow courgette, pumpkin, squash and cucumber inside at the end of April.

> In week 4 harden off shallot, onion and leek seedlings sown inside earlier for

planting out in May.

> Plant onion and shallot sets in the middle of April.

> Feed raspberries, strawberries, gooseberries, blackcurrants and tayberries with bone meal or fish, blood and bone fertiliser. After feeding mulch the plants with well-rotted manure or compost.

The main tasks in May:

> Sow parsnip outside at the beginning of the month. Always use fresh parsnip seed each year as germination is very poor or non-existent with year-old seed.

> Sow sweetcorn inside in week 1 for planting out when all risk of frost has passed.

> Runner beans can be sown indoors or under cloches in week 2. In week 4 harden off seedlings sown indoors.

> In week 2 also sow French beans inside for planting out later.

> Plant onion seedlings, leeks, shallots and spinach raised indoors in week 2 provided no frost is forecast.

> Towards the end of the month harden off pumpkins, courgettes, squashes and cucumbers for planting out in June.

> Sow winter cauliflower inside towards the end of the month.

For those who have an established vegetable garden and want information about what to do each month we have a post on our website that gives growing information, month by month. This is on the left hand side of the home page

Our website address for LADAS is linlithgowallotments.wordpress.com

IMPORTANT NOTICE: We are happy to announce that the **waiting list is now open again.** Please contact us using the CONTACT US page on our website.

Val Corry
Chair LADAS



BUDDING YOUNG FOOTBALLERS HONOUR A LOCAL SPORTING LEGEND..

Murdoch Kennedy



Budding young footballers, both girls and boys, from the local Primary schools will parade their skills at the annual George Allan Memorial Football Festival on Sunday May 10th at Linlithgow Rose FC's Prestonfield ground. Kick-off is at 9am.

Now in its fourth decade, the Football Festival honours the memory of Linlithgow Bridge footballer, George "Dod" Allan, a star centre forward on both sides of the border who, in 1897, became Liverpool Football Club's first Scottish international. Sadly, on the cusp of a glittering career, George died of tuberculosis in 1899, at the age of only twenty-four.

George Allan was one of Liverpool FC's very first star players and his exploits have never been forgotten by the club. After a presentation in 1997, a large photo of the man described as

"a model centre; of fine physique, great speed and no fear" hung proudly in the club museum. He netted the club's 100th goal and was the first player to score for Liverpool when they changed their club colours from the original blue to the more familiar red in September 1896.

The Football Festival has a tried and tested format. Participants play in two seven-a-side leagues: the developmental Reston League at the Social Club end and the more advanced Gallagher League at the Academy end, named after the first two Scottish Junior Cup-winning captains of Linlithgow Rose.

The winners of the Reston League receive the George Allan Shield, while the Gallagher League victors are awarded the George Allan Trophy. A 'Fair Play' trophy, donated by Mrs Georgina Waugh of Erskine, George Allan's great-niece, is also presented.

The event is strongly supported by Linlithgow Rose FC and Linlithgow Rose Community FC. This year, the organisers are delighted to welcome again as main sponsors the Blue Eyes Sports Foundation (BESF), which is

a family registered charity founded in 2012 by Linlithgow residents Alex, Carole, and Robbie Brown. Also sponsoring this year will be local chiropodist and sports podiatrist, Martin Godley, whose children have played in the event.

It is very heartening to see the number of footballers from the Linlithgow area who are now plying their trade at all levels of the game, in Scotland and elsewhere, none more so than nineteen-year-old James Wilson from the "Brig." James is currently on loan from Hearts to Tottenham Hotspur. On March 23rd 2025, he became the youngest-ever player to represent the senior Scotland squad, when he came on as a late substitute in the match against Greece at Hampden,

James played for the winning Linlithgow Bridge Primary teams at the "George Allan" in 2017 and 2018. In 2019, in another winning team, he was joined by younger brothers, Stanley and Alfie. They are also involved at Hearts and this season have played for Hearts B against Linlithgow Rose in the Lowland League.



The action gets underway at 9am on Sunday May 10th and a warm welcome is extended to everyone to come along and cheer on Linlithgow's football stars of the future, all hoping to follow in the illustrious footsteps of George Allan.

SUN
10
MAY



PARTY - at the - PALACE



The Peel at the Palace

Party at the Palace Returns Home to the Peel

Party at the Palace will return to the Peel on 8 and 9 August this year for the 11th staging of the much-loved music festival, first staged in 2014. Event Director John Richardson spoke with Ronald Hunter to share the story behind this year's much anticipated "homecoming".

How it all began

The idea for Party at the Palace grew naturally from John Richardson's background in the music industry, where he worked as a recording studio owner and manager of singers and bands. Visits to outdoor music festivals across the UK, along with the Chanel Métiers d'Art fashion show held at the Palace in 2012, helped shape the original vision.

Working alongside business partner Peter Ferguson, detailed discussions took place with Historic Scotland, ultimately securing permission to use the Peel for the inaugural festival in 2014. With that, the roller-coaster journey of Party at the Palace officially began.

Why the Return to the Peel?

"Party at the Palace was never meant to be another T in the Park," John explains. "Our original idea was an all-Scottish line-up, which proved impractical, but we learned quickly. Booking bands is by far the hardest part - it's never as simple as just asking."

The first year attracted around 5,500 fans per day, and after two successful years at the Peel, the decision was made to expand. In 2016 the festival moved to Bonnyton Farm, allowing

space for a second stage and a more expansive audience experience.

Attendance continued to grow, peaking in 2024 at 11,000 people on the Saturday, close to daily capacity. While successful, the scale brought challenges.

"That day was chaotic," John admits. "All areas came under pressure and we received a lot of justified complaints. Band costs were rising sharply and it became clear we needed to reset and rethink the event."

A scaled-back version in 2025, using only the top field at Bonnyton - similar in size to the Peel - served as a test ahead of a potential return. Following discussions with Historic Environment Scotland and other stakeholders, approval was granted in March 2025 for the festival's return to the Peel from this year.

Daily capacity for August will be 5,000, with a future maximum of 6,000. "The move has been very well received," John says. "We're heading for a sell-out on both days."

Despite the more intimate setting, the festival will retain a second stage showcasing emerging talent, alongside the comedy garden and familiar features enjoyed over the years.

A Community-Focused Approach

Linlithgow Palace and the Peel are among Historic Environment Scotland's most sensitive and significant sites, and the event is planned with that responsibility firmly in mind.

"There are many environmental, logistical and regulatory considerations," John notes, "including nearby St Michael's Parish Church and emergency services provision. We work hard to minimise disruption to residents, though some inconvenience and

noise is unavoidable. Local authority guidelines are strictly followed."

Sustainability at the Forefront

Environmental responsibility has been central to Party at the Palace from the outset, and improvements continue year on year. Measures now include the removal of bottled water sales in favour of on-site water supplies, bans on plastic food containers and cups, compostable alternatives, off-site waste recycling, and solar power usage through a partnership with Linlithgow-based GreenFox Energy.

These efforts have seen the festival shortlisted for Best Sustainability Event at the Scottish Events Awards, with the final taking place in Glasgow on 30 April.

Economic Impact

The event's economic benefits are projected to be between £650,000 and £850,000 in 2026, with longer-term gains also evident. Surveys show 86% of attendees would be happy to return to Linlithgow within six months.

Local suppliers are prioritised wherever possible, and around 120 paid staff are employed each day, including pupils from Linlithgow Academy.

"We know the festival can feel a bit like the circus coming to town," John acknowledges. "It's not for everyone, but overall we believe it's been good for Linlithgow."

Strengthening the Team

The management team was bolstered in 2025 with the arrival of Donald McLeod MBE and John McLaughlin. Donald brings four decades of experience in music and hospitality and lives locally, while John is a highly successful songwriter and producer with multiple UK chart-topping hits to his name.

A Look Back — and Ahead

Past headliners have included Deacon Blue and Simple Minds in 2014, followed by Nile Rodgers and Travis in 2015. The Bonnyton years welcomed acts such as The Proclaimers, Amy Macdonald, Texas, Human League, UB40 and Boney M.

Looking ahead to 2026, there is a sense of coming full circle.

"When we launched in 2014 it was a huge year for Scotland," John reflects. "The Commonwealth Games, the Ryder Cup and the referendum all set the tone. This year feels similar — the Commonwealth Games return to Glasgow and Scotland are back at the World Cup."

That Scottish spirit is reflected in the line-up, with Peat & Diesel headlining Saturday night and Skerryvore closing the festival on Sunday.

For Party at the Palace, the return to the Peel is not just a change of venue - it's a return home.



For tickets, up to date lineup details and more information about PATP 2026 :- www.partyatthepalace.co.uk / email - info@partyatthepalace.co.uk

Ronald Hunter



SAT
8
AUG



SUN
9
AUG



Willow Tree Live Entertainment



Friday 8pm-late
Will Treeby - 17th April
Acoustic Bruce Jamming Session - 1st May

Saturday 9pm-late
Alana Colston - 18th April
Gerry's Karaoke - 25th April
Angela Minty - 2nd May
Kenny Hanlon - 9th May
Shona McVey - 16th May
Elle Baillie - 23rd May
Gerry's Karaoke - 30th May

Sunday 5-8pm
Will Treeby - 31st May

The Willow Tree Function Suite Available For Hire



The Willow Tree
LINLITHGOW

We've Got it Covered

GOAL
TOURNAMENT

ALL THE WILLIOW TREE FOOTBALL
AVAILABLE ON OUR SCREENS

RUGBY
TOURNAMENT

THE BEST PLACE TO
**WATCH
LIVE SPORT**

sky SPORTS



SUN
19
APR

SUN
17
MAY

Sketch of Grange by Scott & Lorne Campbell 1907

GARDEN OPENING AT GRANGE

This spring brings a rare opportunity to visit one of Linlithgow's hidden gems - the gardens at Grange. The gardens at Grange, an A listed Edwardian historic house within a stone's throw of Linlithgow, will open to the public for the first time in a generation. The gardens are opening from 1pm to 5pm on Sunday 19th April and on Sunday 17th May, with all proceeds going to Scotland's Gardens Scheme and Cancer Research. Here Johnny Cadell, the current generation of the Cadell family living at Grange, describes the garden, its history and what to expect for anyone thinking of visiting.

Many locals in Linlithgow and Bo'ness will have passed through or glimpsed parts of the garden at Grange. Our historic avenues, immediately north of Linlithgow Loch and south of the flints at Bo'ness have become part of a popular route for walkers, particularly after the re-discovery of local walks during the pandemic. Much to our surprise walks through the avenues at Grange and reference to 'an Edwardian mansion' now appear in several walking guides, along with walks around Linlithgow Loch, to Hope Monument on top of Airngath Hill, and to and from Bo'ness. The battlemented baronial tower of Grange, once concealed by century old mature woodland, became visible again from Linlithgow after storm damage to the tops of our garden cedars in 2010. In recognition of this renewed visibility, the frequently expressed curiosity of those walking through and in honour of my father who we sadly lost last year, we have decided to go one step further by opening our garden for the first time since 1999.



HISTORY

The garden at Grange first opened under Scotland's Garden Scheme in 1932, since then it opened 31 times, until 1999 when it was last opened by my father. It has of course changed hugely since the house and terraced gardens were built by my great grandfather the geologist Henry Cadell in 1910. At that time an ornamental rose garden, orangery, tea houses and greenhouses (for tropical fruit) were the main features alongside croquet lawns, tennis courts and a curling pond at the top of the hill. The garden changed significantly after the second world war when my grandfather Colonel Henry Moubray Cadell, a keen gardener, returned from wartime service. He extended the orchard and created a rockery in the former quarry for the house, including an extensive nursery for rhododendrons and azaleas which also replaced the tennis lawns. William Cadell, my father, local architect and environmental activist of the 1970's and 80's established much of the form of the garden as it is today and which we have, since 2000, sought to maintain with a much-depleted workforce.

WHAT IS THERE TO SEE?

From the forecourt in front of Grange, walk down steps to a walled garden with croquet lawn, topiary, herbaceous borders, pleached limes, apple espaliers and wisteria. Enjoy the extensive native spring flowers along tree-lined avenues and in our 110-year-old orchard. Search the woods for the rockery with our collection of mature rhododendrons, including several giants. Don't miss our highlight, the blaze of flowering azaleas at the end of the lawn, best seen in May.

A link to the Edwardian era remains with many distinctive and original garden and architectural features surviving. Recently we have recovered much of the wider garden, avenues, orchard and rockery from encroaching trees and undergrowth, creating dry hedges to bring new habitat for wild birds. Today much of the garden has a diverse character within a setting of mature trees where light and shade have altered microclimate and growing conditions whilst creating a labyrinthine experience, with many unusual rhododendrons and a eucryphia Nymans A surviving to giant maturity.

HOW TO GET HERE ?

Due to limited parking space there is an on-line booking system for those intending to come by car. However as the garden is a bit over a mile from Linlithgow and Bo'ness we would encourage anyone feeling vigorous to come on foot. The route up from the east end of Linlithgow Loch is



particularly dramatic with an excellent view over Linlithgow, the loch and Palace en-route.

Booking arrangements and full directions are on the [Scotland's Garden Scheme web page below:](#)

We do hope to see as many as can make it on **19th April or 17th May**, during the late spring or early summer when the garden is at it's very best.

<https://scotlandsgardens.org/grange-linlithgow/?o=14242&f=%7B%22t%22%3A%5B%22all%22%5D%7D>



ROSE SPORTING MEMORIES CLUB GOES FROM STRENGTH TO STRENGTH

The Sporting Memories Club at Linlithgow Rose FC is going from strength to strength and the weekly get-togethers in the boardroom under the Davie Roy stand are attracting ever-increasing numbers.

Sporting Memories is a UK-wide charity and social enterprise that helps older people, including those living with dementia, or depression, or facing isolation and loneliness, to improve their mental and physical wellbeing through regular club sessions, situated within local communities.



The motto is REMINISCE, REPLAY, RE-CONNECT.

The Linlithgow group was set up by, Peter Maguire, whose son, Louis, plays for the Rose. Peter told me:

"I set up this club just over a year ago as I wanted to do some interesting voluntary work in Linlithgow after retirement. In a chance conversation, my cousin Alister mentioned that he was part of a Sporting Memories group in his area and he suggested that it might be something I could be involved in, combining my love of sport with some volunteering. It seemed a good match".

Peter set the wheels in motion for a Linlithgow group by contacting Broxburn-based Donna Mackey, the Scottish representative of the larger UK 'My Sporting Memories' organisation. The next step was to find suitable premises. With his son playing for the Rose, there was an obvious solution:

"I approached the Rose President, Jon Mahoney, and he immediately offered the club's boardroom. More than that, he wanted to become involved as a volunteer too, so we were on our way. Jon has been

invaluable with his involvement and it's good to see the Rose name so closely associated with our sporting theme."

Peter was also able to recruit one of the Rose volunteer ground staff, Drew McErlean, who has been involved in other Sporting Memories Clubs. With a good team in place, all Peter needed was people to come along and take part.

After a slow start, numbers started to pick up and several people became regulars. Over a year since the club started, there are now on average twenty attendees every week. A regular team of volunteers is also on hand to help with setting up the room and serving the free refreshments. Peter would be delighted to welcome even more people. He told me:

"My Sporting Memories' was set up primarily as a Dementia/Alzheimer's support group where people could relate to old sporting events and stories in a comfortable and safe environment. However, it is really for anyone who feels a bit lonely and just needs a day out to reminisce about sport while enjoying some banter over some tea/coffee and biscuits. You just need a thick skin when your team gets beaten the week before the meetings - all in good fun of course!"

"We meet every Thursday - 1.30pm to 3.00pm in the boardroom at the Rose ground".

"We have been well supported by the Rotary, Round Table and SKY, while the Rose FC have allowed bucket collections at some games to help finance running costs and days out. Individuals in the town have also given donations, including 'joiner Chris and 'Aberdeen Roy' from the Rose Social Club and my neighbours Tom & Jackie".

"The Bowling Club and the Rugby Club have welcomed us for informative days out and we enjoyed a trip to the Football Museum at Hampden Park. The local Cycling Without Age chapter brought their trishaws along to show us one day and several people took the opportunity of having a hurl around the park".

"VIP sporting friends from the past have also attended for interesting Q&A

sessions including Ally McLeod, Colin Stein, John Binnie, Gregor Abel, and Rose legends Jimmy Crease and Colin Sinclair".

"Some of our regular attendees keep us amused with song and music, usually led by Neil Macdonald and his ukulele".

If you would like more information about the Sporting Memories at the Rose, contact Peter Maguire at: Pedromaguire57@hotmail.com



ROSE FIXTURES:

Saturday April 18th - away to BONNYRIGG will be the last league game of the season.

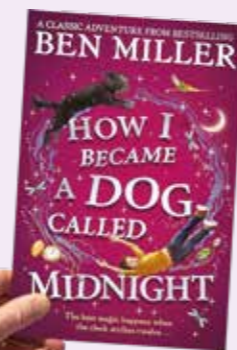
3pm kick-off.

Murdoch Kennedy



HOW I BECAME A DOG CALLED MIDNIGHT

BEN MILLAR



"The fountain's water swirled round and round, creating a whirlpool. Suddenly the surface flashed bright with moonlight and its magic began to work..."

Ben Millar is a best-selling, renowned author of a collection of popular children's stories. How I Became a Dog Called Midnight captures a magical adventure for the novel's main character,

a young boy called George, who lives with his father on the edge of a grand estate called Hill House.

George's father is the practical and calm estate manager, Gabe. Together they maintain the grounds of the impressive Hill House, earning the respect of the owner, Lady Jane, and her daughter Koko, who has a strong friendship with George.

In his dreams, George imagines that he has a dog of his own; a miniature albino chihuahua called Snowball. When Lady Jane's new husband - a magician called Clive - brings his dog called Midnight (a huge and loveable hound with black shaggy fur) to live with them at Hill House, never did George imagine that this would be the beginning of a mind-boggling, magical adventure.

One dark night, a magical mix-up ensues, involving an encounter between George, Midnight and an enchanted fountain. George and Midnight swap bodies and George has a challenge to convey this unbelievable occurrence to his friend Koko, who is unaware that any magic has taken place.

"George opened his eyes. Everything was blurry, as if he was underwater. The colours he could see looked like they were underwater too: just blues, yellows and greys. He tried to rub his eyes, but instead of a hand came a black furry paw!"

George has amazing insight into a dog's life and all the impulses and sensations this creature would experience. As he spends increased time with his master, Clive, he learns of a wicked plot that threatens to disturb Koko's comfortable home life. He and Midnight face a race against time to foil these unsavory plans before the magical body swap becomes permanent, if they are unable to reverse the enchantment.

Ben Millar has written a fast paced, exciting adventure that is charming, funny and magical for children and adults alike. It is a lovely read, whether you are reading aloud or on your own. There is much to enjoy in this story and the narrative will keep readers guessing until the final pages of this spellbinding book.

Lisa Nettleton Lisa Nettleton is a teacher and enjoys reading on her daily rail commute into Edinburgh.



PREPARING WELL FOR DEATH COURSE 2ND MAY

Linlithgow and Avon Valley Parish Church are planning to run a Preparing Well For Death course to help people deal with a number of issues around death and dying. This was first run last autumn and was well attended. Feedback received was excellent. We now plan to repeat this on **SATURDAY 2nd May between 9.30 am and 3pm with a lunch break. It will be in St Michaels Church Hall.**

There will be input from clergy, medical and nursing professionals, a lawyer and a funeral director. We will deal with practical issues like planning and organising a funeral, wills, power of attorney and a range of emotional and spiritual issues related to death and dying.

If you are interested in attending please contact Tom Brown on tmb0655@gmail.com or phone 07808 069280.

Tom Brown



LINLITHGOW AND AVON VALLEY



You are invited Joyful Generosity Gathering

Linlithgow and Avon Valley Church of Scotland warmly invites you to attend one of our three Joyful Generosity Gathering events.

Together we will explore and celebrate how our united parish looks to continue and grow to meet the needs of our community in loving, practical ways, and how your generosity can support this work and mission.

23rd May 2026

Cross House, Linlithgow, EH49 7AL
10am-12noon, 2-4pm, or 7-9pm



Scottish Charity Number SC016185

LINLITHGOW PRIMARY IS WIRED FOR SOUND

Linlithgow Primary School has recently installed a brand-new sound system in the school hall. This state-of-the-art equipment will make a massive difference to the quality of the performances that the pupils can undertake and it will also benefit community groups who use the hall for different purposes.

Head Teacher, Miss Laura Baillie, told me all about the improvement:



"We were really conscious that the audio system in the hall was coming to the end of its working life. We approached a specialist company called Black Light, who are known to install sound systems in halls, community facilities and small theatres. We established that replacing our equipment was going to be really costly - in excess of £5,000. With the tightening around school budgets, that was something we wouldn't have been able to afford ourselves, so we



reached out to some local groups that we thought might be in a position to help us, given that the new equipment was going to be used by the wider Linlithgow community. The Folk Festival Association told us that they were disbanding and were using their remaining funds to help local schools and music groups.

They very kindly offered to give us a healthy donation, which we were delighted to accept. Together with school funds and help from our Parent Council, as well as support from Brodies Solicitors, we were able to go back to Black Light and progress the quote quite quickly".

The new facility is a vast improvement on what was there previously, as Miss Baillie explained:

"It's a high-tech sound system, working off Bluetooth, which means that the staff can link mobile devices to the system and play music quite easily for the children. The microphone system is quite advanced, so there's

less interference and greater clarity of speech sound. We've been able to get four working hand-held mics as well as some lapel mics, which will help if we are doing a question-and-answer type forum on the stage. We also have a couple of radio mics for performance on the stage. This equipment can be used by community groups who hire the hall and they can approach the administrative staff about this".

Along with her depute, Mrs Gordon, and administrative assistant, Mrs Ferguson, Miss Baillie has received full training. She told me that the new sound system has been an instant success:

"Already we see such a difference in the quality of the children's assemblies and performances. They are getting used to the technicalities, which are all part of stage management, and we can teach children the skills involved in putting on a performance".

Further improvements to the school hall will see the replacement of the stage curtains, which have been in place since the school building was opened in January 1967. Miss Baillie sees obtaining new curtains as a major legacy project for the school in its sixtieth anniversary year in 2027, along with the restoration of the bell, which hung at the school's original site at the West Port.

Murdoch Kennedy



Images: Martine Stead

GROUNDWORKS RESURFACING LANDSCAPING

DRIVEWAYS PATIOS & WALLING

OVER 30 YEARS EXPERIENCE

All work from design to completion carried out by our Linlithgow based, fully trained, professional teams.

CALL FOR A FREE QUOTATION:
JAMES: 07801 354316

www.linlithgowpaving.com

LINLITHGOW
PAVING LTD

WEST LOTHIAN COUNCIL
APPROVED CONTRACTORS

PROFESSIONAL TREE SERVICES

Free quotes
Competitive prices
Fully qualified and insured

Linlithgow-based

- Tree removals • Emergency storm damage • Tree care, pruning, management • Hedge Timming • Groundworks

★★★★★

"Cedar trees recently cut down two large trees that were over hanging my roof, and they did an outstanding job. They were professional, efficient and clearly very skilled at what he does. The work was completed safely and was left very clean and tidy afterwards." - Jim Gargaro

★★★★★

"They removed a dead tree for me and left the logs in a neat pile so I could use it as firewood. They were friendly, quick and clean." - David Barnes

Contact us on:
07483 305569 | cedartreesurgeons@outlook.com

Charity Beer and Gin Festival

Saturday 9th May 2026

Burgh Halls Linlithgow
1 PM until 10 PM

16 Beers from local brewers

+

Lin Gin

+ 6 local Gins

Good Food and a Great selection of Beers & Gins, What's not to Like!

Expert Physiotherapy at Life Fit Wellness

Enjoy the view at Kingsfield Golf Centre while receiving specialist care from our clinicians.

We can help with:

MSK Physiotherapy
Arthritis • Joint & Muscle pain • Back pain
Rehabilitation after surgery • Sports injuries

Pelvic Health Physio
Pessary fitting • Prolapse • Incontinence

Mat Pilates at Low Port Centre
Small group, physio-led mat Pilates classes.

Tel: 01324 614 044
Email: info@lifefitwellness.co.uk
www.lifefitwellness.co.uk
Kingsfield Golf & Leisure | Linlithgow | EH49 7LS

**I'M HERE TO HELP
YOU FEEL CONFIDENT
CAREFREE AND
SKIN HAPPY.**



Award winning Clinic-
Skin Salon of the
Year 2025
Tina Arnot
Laser, Light and
Skincare Specialist

**WHY THE ALUMIERMD TXA PEEL IS A
MUST-HAVE TREATMENT FOR ALL AGES.**

The AlumierMD TXA Peel is one of the most versatile, results driven treatments available, making it suitable for clients across a wide age range. Whether you are in your 20-40's looking to maintain healthy skin or in your 50-70's wanting to restore radiance and clarity, this advanced peel offers targeted yet gentle skin correction with minimal downtime.

At the heart of the treatment is **Tranexamic acid (TXA)**, combined with lactic acid and brightening actives. This powerful blend works to reduce pigmentation and discolouration patches left from breakouts, calm inflammation, and improve overall skin tone, while also gently exfoliating and hydrating the skin. Unlike harsher peels, it is suitable for all skin types and tones, including sensitive and mature skin.

BENEFITS FOR DIFFERENT AGES

Ages 20-35

In younger skin, the TXA peel is ideal for prevention and early correction. It helps with:

- > Discolouration patches left from breakouts
- > Dullness from lifestyle or stress
- > Uneven skin tone

Clients will notice brighter, clearer skin with improved texture and fewer breakouts, making it perfect as a "skin reset."

**POWERHOUSE INGREDIENTS
FOR BRIGHTER, GLOWING SKIN**

LACTIC ACID
Gently resurfaces to reveal a radiant glow

TRANEXAMIC ACID
Targets the appearance of discolouration and hyperpigmentation for a more even tone

WHITE SHITAKE MUSHROOM EXTRACT
Boosts overall brightness and clarity



Ages 35-55

As skin begins to show signs of ageing, this peel works on multiple concerns:

- > Pigmentation and sun damage
- > Fine lines and early loss of firmness
- > Uneven tone and texture

The result is smoother, more radiant skin with improved clarity and a visible "glow," as well as softening of fine lines.

Ages 55-75+

For more mature skin, the TXA peel focuses on restoring brightness and hydration:

- > Age spots and long-term sun damage
- > Thinning, dull skin
- > Dryness and uneven tone

Skin appears fresher, plumper, and more even, with a healthier, rejuvenated look.

WHAT CAN IT ACHIEVE?

This peel is particularly effective for:

- > Melasma and stubborn pigmentation
- > Sunspots and age spots
- > Post-inflammatory Hyperpigmentation (e.g. after acne)
- > Redness and uneven complexion

By targeting melanin production and calming the skin, TXA helps create a more even, balanced complexion over time. After just one treatment, clients often see brighter, smoother skin within a week, with continued improvement as the skin renews.

What Will Clients See?

- > A brighter, more radiant complexion
- > Smoother skin texture
- > Reduced pigmentation and clearer tone
- > Hydrated, healthier-looking skin

Results are progressive, meaning each treatment builds on the last for long-term skin transformation.

Why Make It a Regular Treatment?

For best results, the AlumierMD TXA Peel works beautifully as a maintenance treatment every 3 months. Regular sessions help:

- > Keep pigmentation under control
- > Maintain brightness and glow
- > Support ongoing skin renewal

Think of it as part of your long-term skin health plan—not just a one-off treatment, but a consistent investment in clearer, stronger, and more youthful-looking skin at any age.

Skin Happy, 42 High Street,
Linlithgow Tel: 01506 888138
www.skinhappy.co.uk
E: info@skinhappy.co.uk



f SkinHappy @ skinhappyme



BOOK NOW

MORE INFORMATION ON CHEMICAL PEELS SCAN THE QR CODE OR VISIT THE WEBSITE AND CLICK ON THE TREATMENT TAB FOR MEDICAL GRADE FACIALS AND CHEMICAL PEELS.

Rotary
Club of Linlithgow Grange



**LINLITHGOW'S
TREE OF LIGHT**

LINLITHGOW'S TREE OF LIGHT

Linlithgow Grange (RCLG) continued its support of local charitable organisations again in 2025 with its Linlithgow's Tree of Light festive period fund raising initiative. The event kicked off on the day of the Advent Fayre and ran until the end of December.

Thanks to the generosity of the good folks of Linlithgow, the fantastic support of numerous local businesses, and with the help of Gift Aid, **£3,750** was raised over the five weeks of the event. A fantastic effort by any measure. Linlithgow Link, Positive Pathways Bereavement Support, and Linlithgow & District Community Day Care Centre - all worthy causes operating in the Linlithgow community - have all benefitted from an equal share of the funds gathered.

RCLG would like to thank everyone who donated and/or placed a dedication

on the Tree. Particular thanks go to Veitch Solicitors for their very generous donation again this year. Thanks also go to West Lothian Council for the use of their tree at the Cross, CGH Creative and JMK Printing for their assistance with the event resources, and our corporate sponsors Alan Steel Asset Management, Stewart Electrical, and Mason Homes - their financial support ensures that every pound of public donation goes to the designated charities.

At the end of the day the event is a community endeavor. Many other local businesses also rallied round again this year and supported the project in kind by taking donation packs and posters for wider distribution. Pacitti Jones, Flowers by Carolyn, and Wilsons Newsagents also helped again this year as collection points. We are all incredibly grateful for this assistance. It makes such an enormous difference.

We will of course be running the event once again in 2026, so look out for the announcements in the Autumn.

2025 marked the event's 10th anniversary. Run by RCLG since its inception, the event has raised more than £28,000 for local charities.

More information can be found at www.linlithgowtreeoflight.org.uk or on Facebook at <https://www.facebook.com/linlithgowtreeoflight/>



Allan M Robertson

Club President 2025/2026
The Rotary Club
of Linlithgow Grange



SPONSORED BY GREENFOX ENERGY

TICKETS ON SALE NOW!

REDSFEST

RUGBY 7S MUSIC FOOD BEER

SATURDAY 16TH MAY 2026

SCAN QR CODE FOR TICKETS

TICKETS £10 UNDER 18S GO FREE FAMILY & DOG FRIENDLY

YOUR LINLITHGOW BASED DESIGN COMPANY
- ESTABLISHED 2010 -

**16
YEARS**

**CREATIVE
DESIGN
FOR LOCAL
BUSINESS...**

LOGO / BROCHURE / SIGNAGE / WEB

cgh creative

EXPERIENCED DESIGNER - HELPING
NEW & ESTABLISHED COMPANIES
COMMUNICATE EFFECTIVELY


T. 07843 856922

www.cghcreative.co.uk

star barber

TRADITIONAL TURKISH BARBER

HOT TOWEL SHAVES
GENTS HAIR CUTS & STYLES
BEARD TRIMS & STYLES
OAP RATES
KIDS & BOYS HAIR CUTS
PATTERN DESIGNS
HIGH LIGHTS
GIFT VOUCHERS



OPENING HOURS
MON-TUE-WED- 9AM-6PM & THURS-FRI 9AM-7PM & SAT 8AM-5PM
76 THE VENNEL LINLITHGOW EH49 7ET 01506237387

FO XE ARKO MEN

Facebook

LINLITHGOW SPORTS PODIATRY & CHIROPODY CLINIC

Martin Godley BSc, MSc

Sports Podiatry & Chiropody Clinic Linlithgow

- > General/High Risk Foot & Nail Care
- > Biomechanics & Gait Analysis
- > Custom made Orthotics
- > Foot & Lower Leg Mobilisation
- > Low Level Laser Therapy
- > Both Elite and Recreational Athletes treated

Following guidelines from College of Podiatry the clinic is open to patients with Emergencies or in pain and discomfort. Full safety measures in place. For appointment please call 07596954189. Thank you for all your support.

Appointments available at:
Unit 8, Braehead Business Units
Braehead Rd, Linlithgow EH49 6EP
www.podiatryscotland.co.uk Tel: 07596 954189
Email: m.g.podiatry@gmail.com



RESIDENTIAL AND COMMERCIAL UPHOLSTERY SPECIALISTS

Johnston & Deans Upholstery Ltd provide the highest quality, tailored designs to suit the needs of all our customers.

We pride ourselves on the delivery of Upholstery, Bespoke Furniture and Commercial projects. Our team of craftsmen & skilled professionals will cost, design and create outstanding solutions from our base at Mill Road Ind. Estate, Linlithgow EH49 7DA.
www.johnstonanddeans.com

T: 01506 822744
E: johnstonanddeans@gmail.com



GROUT LOOKING TIRED?

TIME TO REFRESH OR RECOLOUR
NO GROUTING REQUIRED.

Louis Maguire
T: 07470 655063
www.groutgleam.co.uk/centralbeltscotland

SCAN ME → 

Ace Tree SURGEONS

Fully qualified arboricultural specialists

specialising in:

- * Sectional felling of dangerous trees
- * Limb removal * Hedge trimming
- * Pruning and Shaping * Stump Grinding
- * Fully Insured * 24 Hour Service
- * Seasoned hardwood firewood for sale.

For a **FREE** estimate call (01506) 847 049 or mobile 07850 624 939

www.acetreesurgeons.com

Christie

...the baker

SOUTH SCOTLAND REGIONAL WINNER

Discover our latest promotions, limited-edition creations, and elegant celebration and wedding cakes on our website and across our social media channels.

The freshest Morning Rolls in town.

www.christiethesbaker.co.uk
216 High Street, Linlithgow. Tel: 01506 248585

D. WATSON ROOFING LTD

- > Tiled Roofing
- > Slate Roofing
- > Flat Roofs
- > Chimney Repairs
- > UPVC Roofline
- > Gutter Replacement
- > All Repairs and Re-roofing works undertaken.

T. 01506 847 885

www.dwatsonroofing.co.uk
email: graham@dwatsonroofing.co.uk
D Watson Roofing Limited
41 Mill Road Industrial Estate
Linlithgow EH49 7SF

CHAS
NFRC

Colin Lowie

PAINTER & DECORATOR

169B High Street, Linlithgow

www.colinlowiedecorating.co.uk

t. 01506 206161
m. 07817 105659

High Quality workmanship is our trademark.
Specialists in interior and exterior Painting and Decorating.
Call me for an estimate.

LINLITHGOW BASED, 16+ YEARS

JAZZERCISE

YOU BELONG HERE

WHY JAZZERCISE?

For over 55 years, we've empowered women worldwide to transform their vitality - and have some FUN too! Dance fitness & strength training to hit music with motivating instructors, you'll fall in love with your workout while boosting confidence, stamina and strength.

NEW CUSTOMER OFFER
2 WEEKS FOR £22!

GET STARTED → 

The original dance party workout



HOUSING (SCOTLAND) ACT 2025: WHAT'S CHANGING?

The impact of recent developments in the Gulf on the Scottish housing market remains uncertain. At Paul Rolfe, however, activity from both buyers and sellers has remained steady, with no noticeable slowdown so far.

In the world of letting however, a major change shaping the landscape this year is the introduction of the **Housing (Scotland) Act 2025**, with key elements being phased in from 26 March 2026. Below is a breakdown of the most significant updates and what they mean for landlords, tenants, and letting agents.

Housing (Scotland) Act 2025: What's Changing?

Updates for Letting Agents

The Act modernises the letting agent registration system to improve clarity, transparency, and consumer confidence.

Key changes include:

More detailed registration requirements

Agents must now provide information on:

> Anyone owning 25% or more of the business

> Anyone directly involved in controlling or governing the agency

This clarification removes previous ambiguity, ensuring both ownership and control information is declared.

Mandatory display of registration numbers

Letting agents must display their

registration number on all social media channels used for business.

Longer visibility of compliance issues

Notes of refusal or removal from the register will remain public for 3 years (previously 12 months).

This enhances transparency, helping consumers identify compliant agents and avoid non-compliant operators.

Rent Control & Tenancy Changes

Effective from 1 April 2027:

Longer time to challenge rent increases

Tenants will have **30 days** (previously 21) to apply to a rent officer if they want to challenge a PRT (Private Residential Tenancy) rent increase

Limits on rent assessments

Rent officers can no longer raise the rent above the figure proposed by the landlord, even if market value is higher.

They must either:

> Set the rent at the landlord's proposed level, or

> Reduce it if appropriate based on evidence.

Joint tenancy changes

A single joint tenant will be able to end the tenancy for all tenants, reversing current rules that require all joint tenants to give notice.

More detailed guidance will be published closer to implementation.

This clarification removes previous ambiguity, ensuring both ownership

and control information is declared.

New Obligations for Landlords

Pets & personalisation

Landlords will be prevented from unreasonably refusing tenant requests to:

> Keep a pet

> Personalise the property

No rent increases in the first year

Rent increases will be prohibited during the first 12 months of any new PRT

Converting older tenancy types

The government will have the power to regulate the conversion of:

> Assured tenancies

> Short assured tenancies into Private Residential Tenancies (PRTs).

More detailed reporting requirements

Local authorities or Scottish Ministers may request information from registered landlords, such as:

> Property address and tenancy type

> Occupancy information

> Rent payment method

> Date of last rent increase

> Furnished/unfurnished status

> Repair condition

> Energy efficiency rating.

If you would like any guidance on how these changes may affect you, please contact our team of ARLA qualified local agents.



PETS' CORNER



This month Westport Vet's Pet of The Month is Sherman Waddall.

Sherman is a twelve year old Basset Hound.

Sherman is a rescue dog. He found his forever home with an amazing family in Linlithgow two years ago when he was ten years old.

Sherman's owners, Tracey and Peter, describe him as boisterous, loving, and a wee bit stinky!

He makes them smile as he follows them literally everywhere!

His favourite thing is to go for a very slow walk sniffing every single thing on the way from their house and along the canal, then walks straight back afterwards without any sniffing.

His favourite toy is a stuffed soft multicoloured llama - he has a love for favouring anything that is soft... and expensive!

He is happiest when he's chilling out in the evenings on his bed in the lounge. He is not a fan of small furry male dogs.

He has a bit of a cheeky habit when he is left home alone - even if this is for just five minutes. He lets his owners know he isn't impressed at the cheek of being discluded (for a whole five minutes) with what his owners call a "protest poo", despite having been taken to the toilet before his humans go out. Being a rescue dog some habits have been a little trickier to sort out!

They recently celebrated Sherman's

12th Birthday. Sherman enjoyed a birthday stroll along the canal before indulging in "a 'Jumbone' then a 1/2 cup of 'coffee' (his absolute fav thing)" as a special birthday treat.

This year, the family are most looking forward to taking Sherman to 'Basset Waddels' - where they meet up with other basset hounds, all go for a walk together then have a picnic. Tracey and Peter say it's certainly a sight to see, with so many bassets all together!

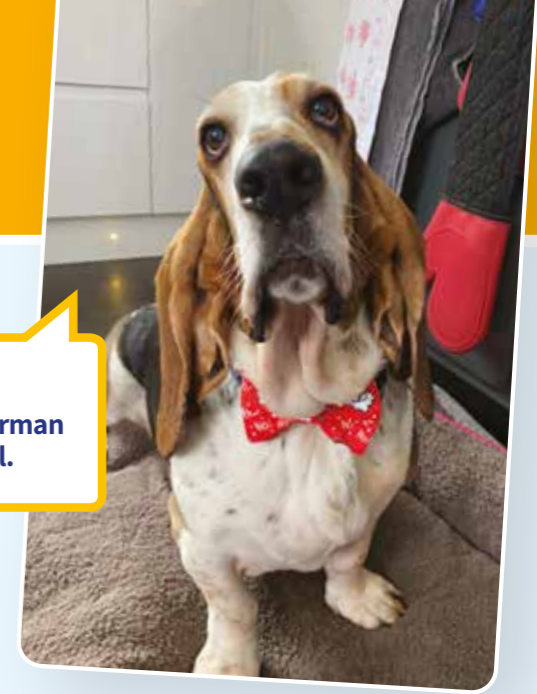
Sherman's birthday celebrations and plans for this year are all the more poignant after Sherman became very unwell just a few days before Christmas. Sherman had a condition called Gastric Dilatation Volvulus (GDV).

Any breed of dog can develop GDV, however it is more commonly seen in deep chested and giant breeds, and in middle-aged or older dogs.

GDV occurs when a dog's stomach bloats (fills up with gas) and twists, causing the stomach's entrance and exit to become blocked. Gas then continues to fill the stomach after it twists. This puts a lot of pressure on other organs, can leak bacteria into the bloodstream and can also risk causing the spleen (which is next to the stomach) to also twist.

The most common signs of GDV include retching, restlessness, pale gums, breathlessness, and bloating. However, although bloating is

Hello I'm Sherman Waddall.



common, it is not always seen, so signs of GDV are not always immediately obvious.

Dogs suffering from GDV become very unwell very quickly. They require rapid treatment and may also require treatment for shock. The only way to 'fix' a GDV, is by performing high risk surgery to untwist the stomach. Unfortunately, even with surgery, some GDVs can still be fatal. It is a very serious condition.

When Tracey and Peter first noticed Sherman wasn't himself, their fast action to bring him straight in to be seen by the Westport 24 emergency team, was an action which saved Sherman's life.

Sherman is one very lucky dog - his surgery was successful and he has made a full recovery!

In an emergency, or if you have any concerns about your pets, always seek veterinary advice when you first notice any signs of concern.

Westport Vets are here for your pets 24/7, 365 days.

In an emergency always phone, 01506 844165.

For enquiries please email surgery@westportvets.com

Westport Veterinary Clinic, Unit 42 Mill Road industrial Estate, Linlithgow EH49 7SF



LINLITHGOW ATHLETIC CLUB...

It's been a fantastic and action-packed start to 2026 for Linlithgow Athletic Club, with members of all ages delivering outstanding performances across Scotland, the UK and beyond - while continuing to make a real difference in the local community.

SENIOR SUCCESS

Our senior athletes have been in exceptional form, with results and participation levels showcasing the strength and depth of the club. At the **Alloa Half Marathon**, Sam O'Neill led the way with a phenomenal **1st place finish in 1:10**, while an incredible **21 LAC runners** took part.

Lisbon Half Marathon saw PBs for **Grant Hunter (1:17)**, **Steven Hunter (1:56)** and **Katie Marelic** who knocked 4 seconds off her PB.

Inverness Half Marathon brought PBs for **Adeline Armstrong (1:39)** and **Laura Ross (1:58)**, alongside strong runs from **Cody Stevenson (1:24)** and **Martin Hawksey (1:23)**.

Rebecca Evans delivered a standout performance at the **Scottish Indoor Masters Championships**, taking **1st place, breaking the W50 championship record**.

JUNIOR ACHIEVEMENTS

Our junior athletes continue to go from strength to strength, delivering exceptional performances at local, regional and national level.

Mia (P6) taking 1st place and **Isla (P5)** securing 2nd at the Falkirk Schools Race.

At **junior parkruns**, the momentum continues: Multiple PB streaks across the squad. Special

mention to **James** celebrating his 100th parkrun milestone!

Our juniors have also represented the club at events such as the **XC Nationals at Callendar Park** and

Borders XC Series - with **Maisie and Hannah** securing podium places!

TRAINING FOR EVERYONE

At the heart of Linlithgow Athletic Club is a welcoming and inclusive training environment for all abilities.

Whether you're just starting out or looking to improve performance, there's a place for everyone - supported by qualified coaches and a fantastic club community.

NEW WEBSITE NOW LIVE

We're delighted to launch our new website www.linlithgowathletics.org

The site makes it easier than ever to explore training, events, membership and everything happening at the club.



How much is your home **worth**?

T 01506 828282
E linlithgow@paulrolfe.co.uk
W paulrolfe.co.uk

Paul Rolfe 
SALES AND LETTING